

[www.visionaryhomes.com](http://www.visionaryhomes.com)



# Aberdeen

4 Elevations Available

 2,501 Sq.Ft.

 4 Bedrooms

 2.5 Bathrooms

 2 - 3 Car Garage

The Aberdeen floor plan showcases a stylish and functional design with an open concept layout, flex room off the entry, mudroom and half bath near the garage, and a walk-in pantry within the kitchen. With 4 bedrooms, 2.5 baths, and a 2-car garage, this floor plan offers you and your family a space you'll love. Upstairs you'll discover a loft space, spacious owner's suite and bath, convenient upstairs laundry, bedrooms, and a bathroom.



Craftsman



Farmhouse



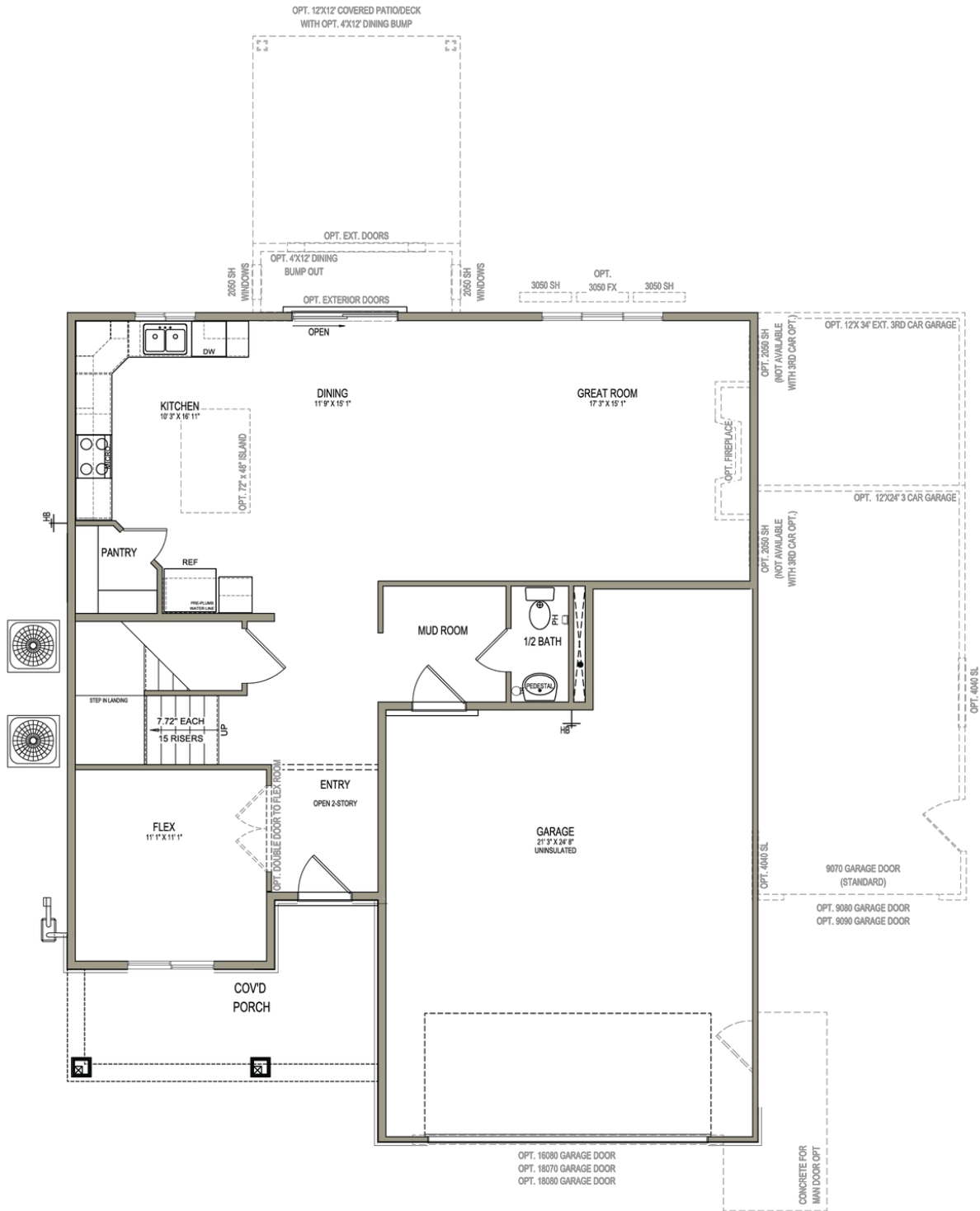
Traditional w/Stucco

[www.visionaryhomes.com](http://www.visionaryhomes.com)



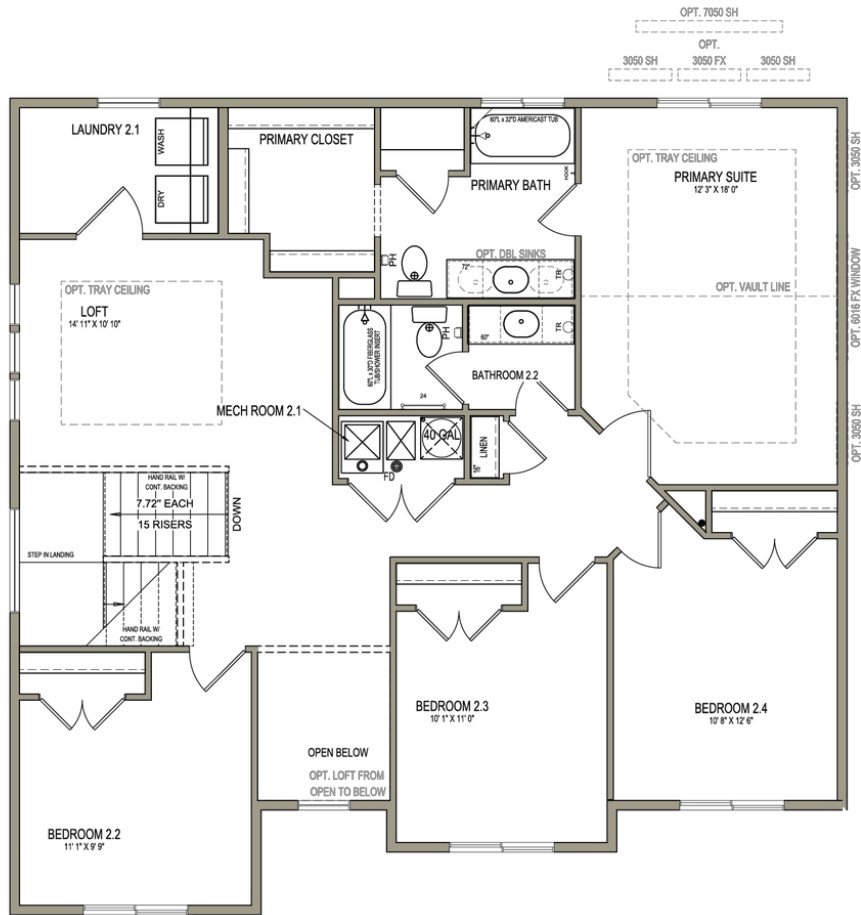
Traditional w/Hardboard

**MAIN LEVEL - SLAB ON GRADE**



\*Visionary Homes reserves the right to change prices without notice. Approximate square footage and options shown in plan may not be included in base price.

### UPPER LEVEL



\*Visionary Homes reserves the right to change prices without notice. Approximate square footage and options shown in plan may not be included in base price.