


www.visionaryhomes.com


Sumac

4 Elevations Available

 2,561 Sq.Ft.

 4 Bedrooms

 2.5 Bathrooms

 2 - 3 Car Garage

One of our most popular floor plans designs, everything about The Sumac 2-story floor plan is stunning with 4 beds and 2.5 baths. Walk through the entrance to see floor to ceiling windows in the family room, which bring plenty of natural light into the space, for a bright and cozy space leading into the kitchen and dining. A walk-in pantry and island to the kitchen provide both storage and counter space for all your cooking needs. Discover the owner's suite with gorgeous windows, an owner's bath, and walk-in closet also featuring windows. Up the stairs, a loft which is open to below with railing invites the light in from the family room floor to ceiling windows, and can be used as a lounge or study space. With three bedrooms upstairs, two of which feature walk-in closets.



Craftsman



Farmhouse



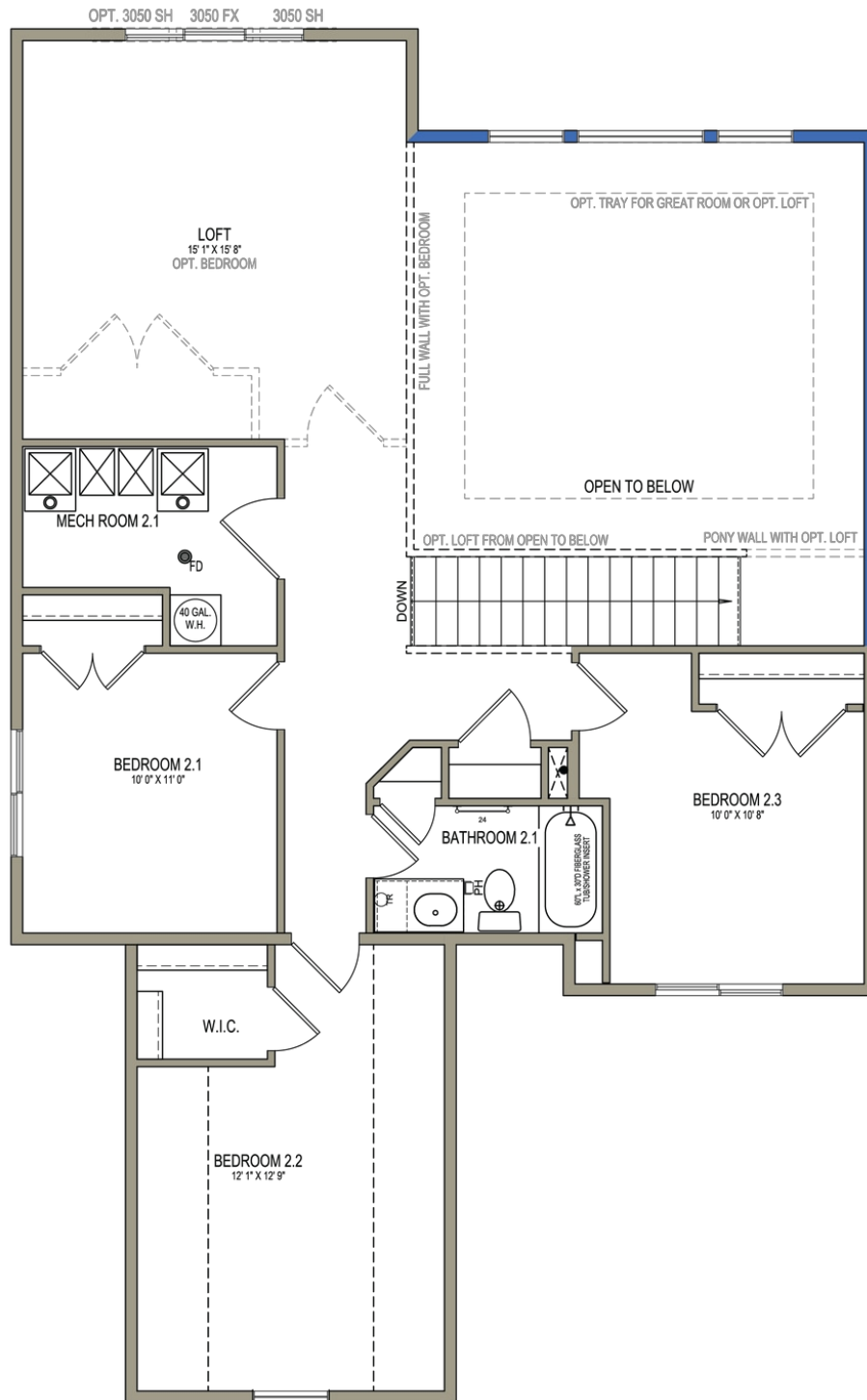
Traditional w/Stucco

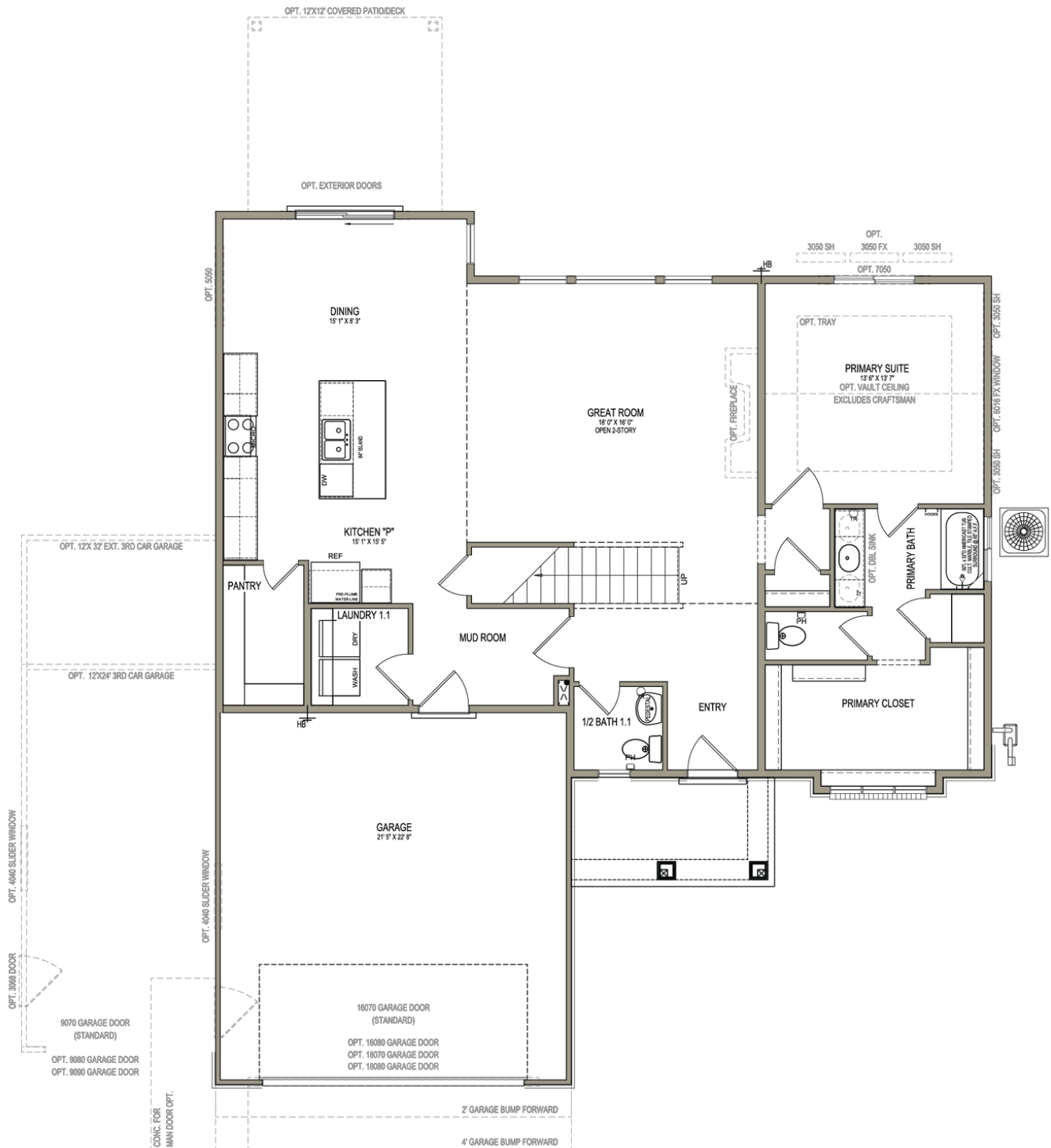
www.visionaryhomes.com



Traditional w/Hardboard

UPPER LEVEL





435.228.4702
visionaryhomes.com