



THE SIERRA VISTA AT AZALEA

350 W Old Hwy 91
Ivins, UT 84738



VISIONARYHOMES.COM

ABOUT THE PLAN

With 3 bedrooms and 2.5 bathrooms, The Sierra Vista two-story townhome offers up style and function in a modern appeal. On the main floor, you and your family can relax in the family room and watch TV to cook and dine in the kitchen and dining nearby, thanks to the open concept design. The kitchen provides a spacious walk-in pantry and additional counter space with a kitchen island for easy prep and cooking. Everything from a coat closet at the entry to the mudroom off the garage, provide additional storage space throughout. You're sure to love all of the upstairs living space, with a loft for turning into a study, lounge, or playroom, to the primary bedroom featuring a spacious bathroom and large walk-in closet including a window.



Scan for more info



3 Bedrooms



2.5 Baths



1 Car Garage



1606 Finished Sq. Ft.

Call or text to make an appointment today!
435-236-2054



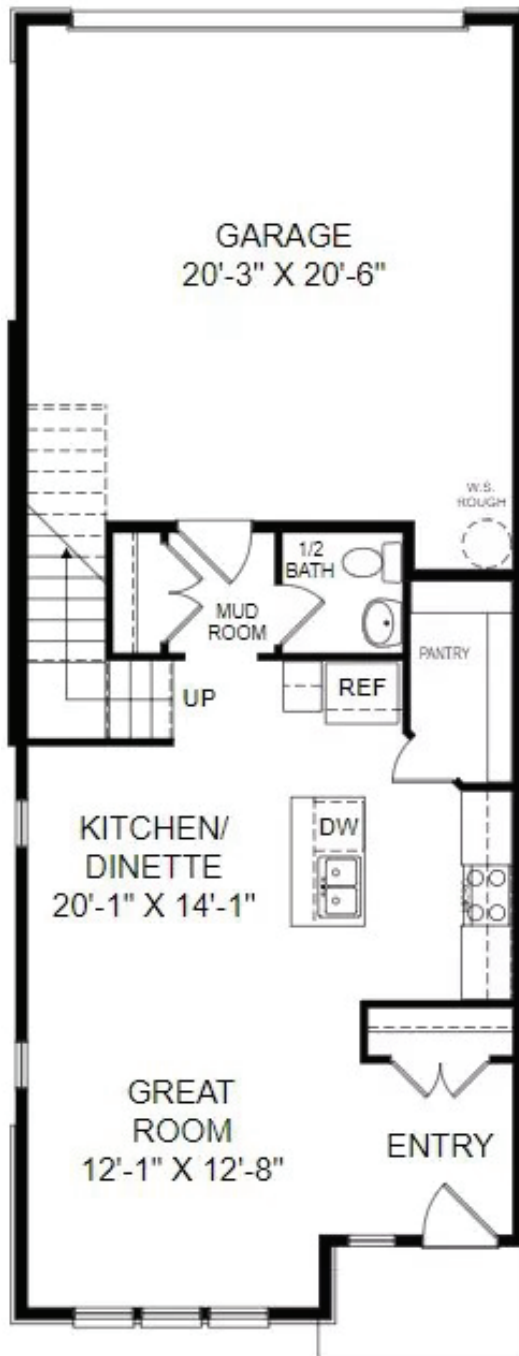
OFFICIAL
HOMEBUILDER
OF THE
UTAH JAZZ

THE SIERRA VISTA



MAIN LEVEL

630 SQ. FT.



UPPER LEVEL

976 SQ. FT.

