



THE MEAD

AT DESERT
COLOR

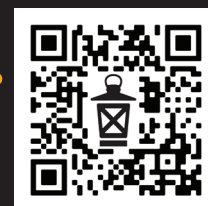
6005 S Carnelian Pkwy
St. George, UT 84790



VISIONARYHOMES.COM

ABOUT THE PLAN

With a stunning exterior design that complements the beautiful St. George landscape and a functional floor plan, The Mead townhome has it all. This two-story townhome includes 3 bedrooms and 2.5 bathrooms, with an open concept main living space. At the entrance, you'll discover your family room at the front of the home and your kitchen and dining nearby, with a large walk-in pantry and a kitchen island. Upstairs, a loft creates additional space to turn into a lounge, study, or playroom. Not only does the primary suite feature a spacious walk-in closet, but one of the other bedrooms does as well, providing you with storage space for your clothes to your other essentials. Upstairs you'll also find your laundry room for ultimate convenience.



Scan for more info



3 Bedrooms



2.5 Baths



2 Car Garage



1,714 Finished Sq. Ft.

Call or text to make an appointment today!
435-228-4702



visionary
HOMES

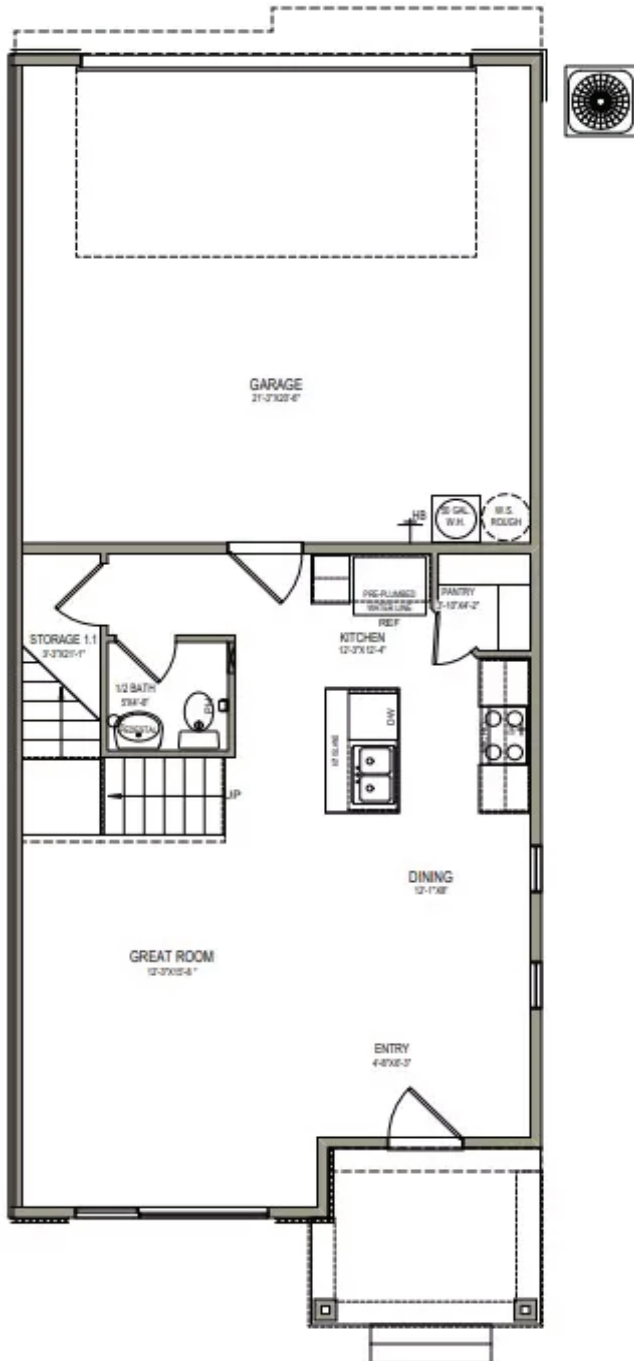


OFFICIAL
HOME BUILDER
OF THE
UTAH JAZZ

THE MEAD

MAIN LEVEL

615 SQ. FT.



UPPER LEVEL

1,099 SQ. FT.

