



THE ANASAZI AT DIVARIO

673 W Fire Sky Dr.
St. George, UT 84790



VISIONARYHOMES.COM

ABOUT THE PLAN

Let The Anasazi welcome you in with the open-to-below entryway for plenty of natural lighting to shine into your living space. The Anasazi includes 4 bedrooms and 2.5 bathrooms, with a flex room off the entry to turn into anything from a home office to a craft room or additional bedroom. The main living space has an open-concept layout, for a natural flow from the kitchen to family room. Upstairs you'll discover a loft for additional space in your home, a convenient laundry room, and the spacious primary suite that includes a gorgeous bathroom, and large walk-in closet.



Scan for more info



4 Bedrooms + Flex



2.5 Baths



2-3 Car Garage



2,553 Finished Sq. Ft.

Call or text to make an appointment today!

435-241-3646



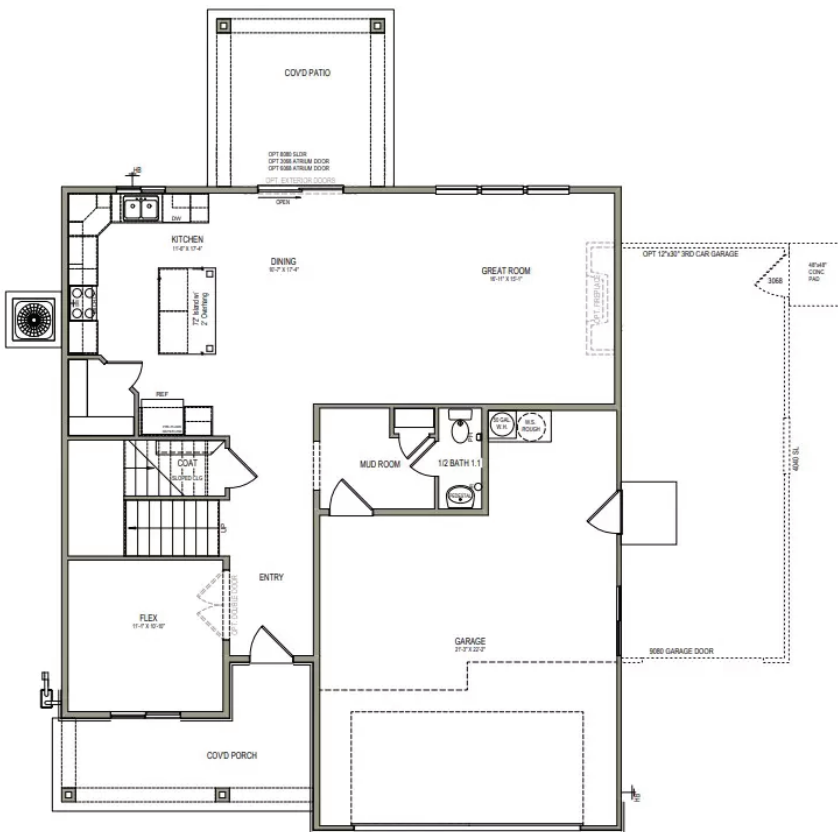
OFFICIAL
HOMEBUILDER
OF THE
UTAH JAZZ

THE ANASAZI



MAIN LEVEL

1,111 SQ. FT.



UPPER LEVEL

1442 SQ. FT.

