



THE SADDLEWOOD AT BEVAN ESTATES

960 W 800 N
Tremonton, UT, 84337

VISIONARYHOMES.COM

FARMHOUSE



TRADITIONAL



Scan for more info

ABOUT THE PLAN

Featuring 3 beds and 2.5 baths, The Saddlewood 2-story floor plan has a stylish and functional design that's classic. An open-concept main living space with the family room, kitchen, and dining area provide a welcoming nature as you walk down the entry hallway. The spacious owner's suite upstairs invites you in with its large windows, owner's bath, and huge walk-in closet worth boasting about. At the top of the stairs you'll discover a loft space that's open to below to the entrance for an airy and bright addition in the home. A laundry room is centered on the second floor for ultimate convenience to your weekly routine. Create additional living space with an optional finished basement featuring a bedroom with a walk-in closet, bathroom, and open recreation room.

Call or text to make an appointment today!
435-246-4785



3-4 Bedrooms



2.5-3 Baths



2-3 Car Garage



1,878 Finished Sq. Ft.



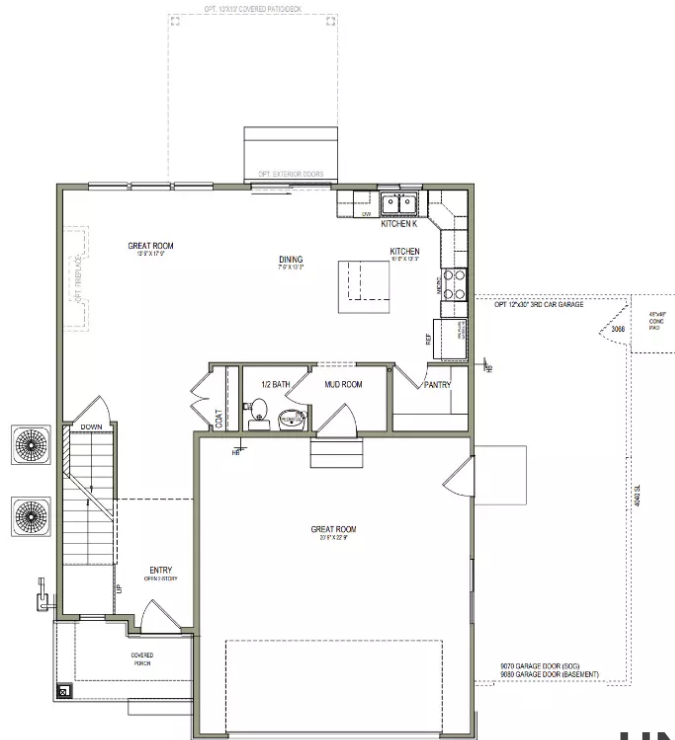
OFFICIAL
HOMEBUILDER
OF THE
UTAH JAZZ

THE SADDLEWOOD



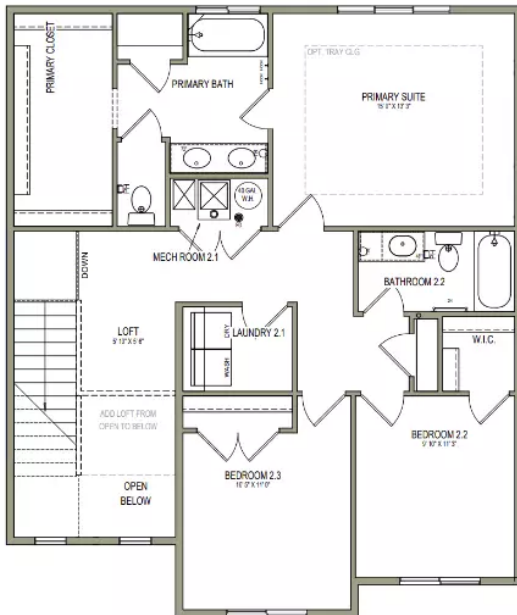
MAIN LEVEL

782 SQ. FT.



UPPER LEVEL

1,096 SQ. FT.



UNFINISHED BASEMENT

700 SQ. FT.

