



# THE WESTMINSTER AT BEVAN ESTATES

705 North 200 East  
Tooele, UT, 84074

VISIONARYHOMES.COM

FARMHOUSE



TRADITIONAL



*Scan for more info*

## ABOUT THE PLAN

The Westminster floor plan is both cozy and stylish with 3 beds and 2.5 baths. From its modern and functional layout, with an open-concept main living space and bedrooms on the upper floor. Spend morning and evenings in the kitchen, dining, and family room as you cook, eat, and relax with your family. Upstairs, the spacious owner's suite features an owner's bath with a water closet and large walk-in closet, you'll love. A laundry room also upstairs, provides ultimate convenience for your lifestyle. This floor plan with options can include up to 4 beds and 3.5 baths.

Call or text to make an appointment today!  
**801-985-6448**



3-4 Bedrooms



2.5-3 Baths



2-3 Car Garage



2,302 Finished Sq. Ft.



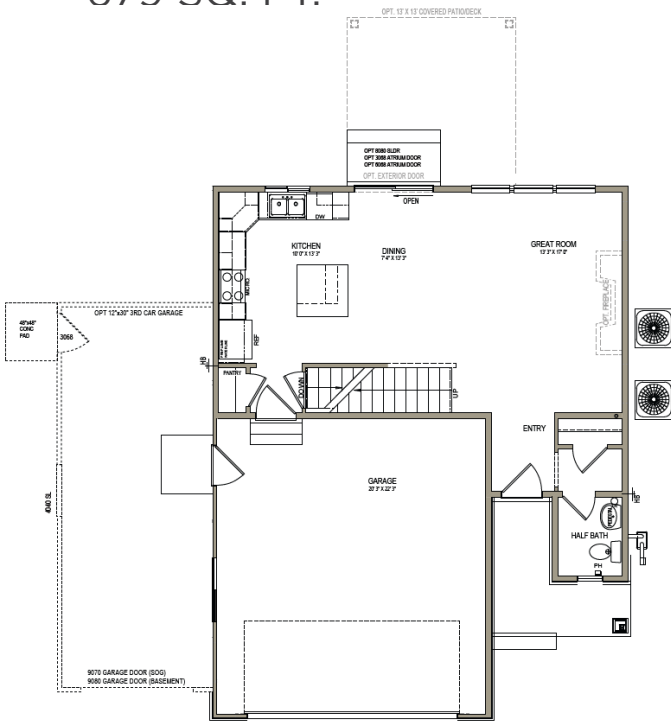
OFFICIAL  
HOMEBUILDER  
OF THE  
UTAH JAZZ

# THE WESTMINSTER



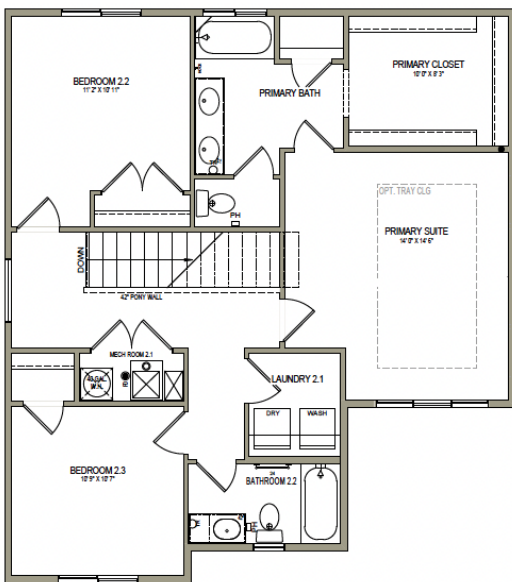
## MAIN LEVEL

679 SQ. FT.



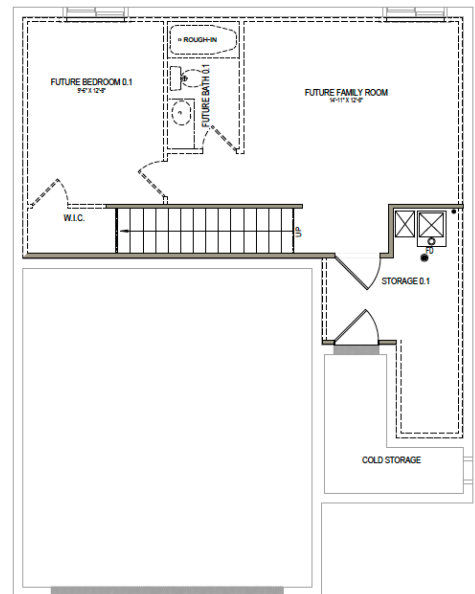
## UPPER LEVEL

1,017 SQ. FT.



## UNFINISHED BASEMENT

605 SQ. FT.



705 North 200 East, Tooele, UT, 84074

| [visionaryhomes.com](http://visionaryhomes.com) | 801-985-6448