



# THE PENDLETON AT CARSON RIDGE

1758 S 270 W  
Salem, UT, 84653

VISIONARYHOMES.COM

FARMHOUSE



TRADITIONAL W/STUCCO



*Scan for more info*

## ABOUT THE PLAN

The Pendleton floor plan showcases 3 beds and 2 baths. With a beautiful exterior and functional interior, this home will be easy to call home. A flex room at the front can be turned into a room of your choice, whether a home office or children's playroom, while the family room, kitchen, and dining have an open-concept design for flow. A large pantry and extra counter space from the kitchen island, create the perfect kitchen to cook. The spacious owner's suite features a massive walk-in closet and an owner's bath. Create additional space to your home with an optional finished basement, which can include 3 more bedrooms, a bathroom, and open recreation room for movie nights, game nights, or whichever you decide. This floor plan with options can include up to 6 beds and 3.5 baths.

Call or text to make an appointment today!  
**801-921-5719**



**3-6 Bedrooms**



**2.5-3 Baths**



**2-3 Car Garage**



**2,049 Finished Sq. Ft.**



OFFICIAL  
**HOME BUILDER**  
OF THE  
UTAH JAZZ

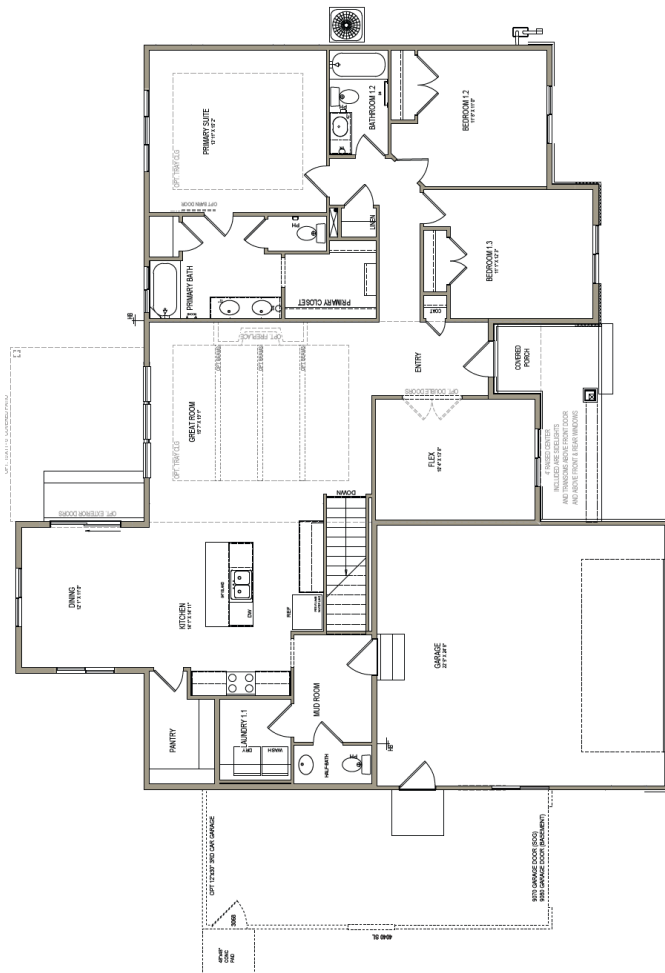


# THE PENDLETON



## MAIN LEVEL

2,049 SQ. FT.



## BASEMENT

1,896 SQ. FT.

