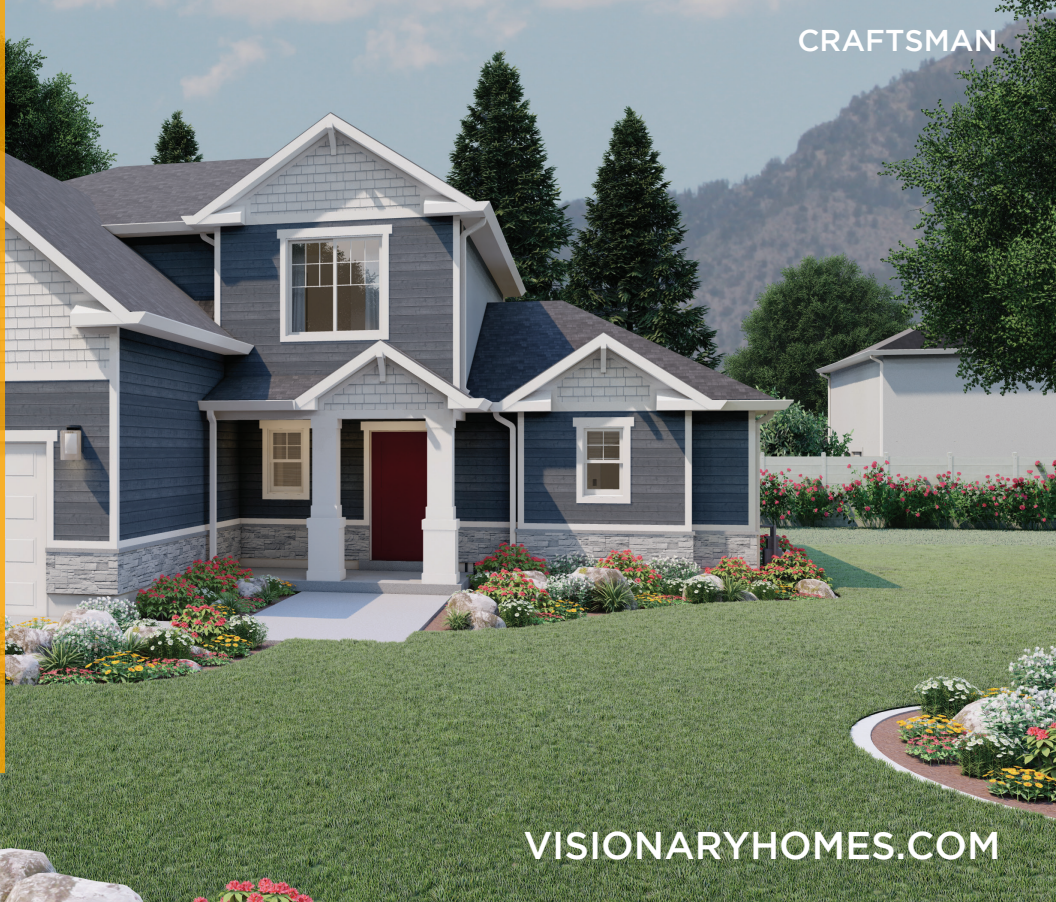




THE SUMAC AT CARSON RIDGE

1758 S 270 W
Salem, UT, 84653



VISIONARYHOMES.COM

FARMHOUSE



TRADITIONAL W/STUCCO



Scan for more info

ABOUT THE PLAN

One of our most popular floor plans designs, everything about The Sumac 2-story floor plan is stunning with 4 beds and 2.5 baths. Floor to ceiling windows in the family room bring plenty of natural light into the space, for a bright and cozy space leading into the kitchen and dining. A walk-in pantry and island to the kitchen provide both storage and counter space. Discover the owner's suite with gorgeous windows, an owner's bath, and walk-in closet. Up the stairs, a loft which is open to below with railing invites the light in from the family room floor to ceiling windows, and can be used as a lounge or study space. With three bedrooms upstairs, two of which feature walk-in closets. Create additional living space with the basement, for more bedrooms, a bathroom, storage space, and a recreation room for game and movie nights.

Call or text to make an appointment today!
801-921-5719



4-7 Bedrooms



2.5-4 Baths



2-3 Car Garage

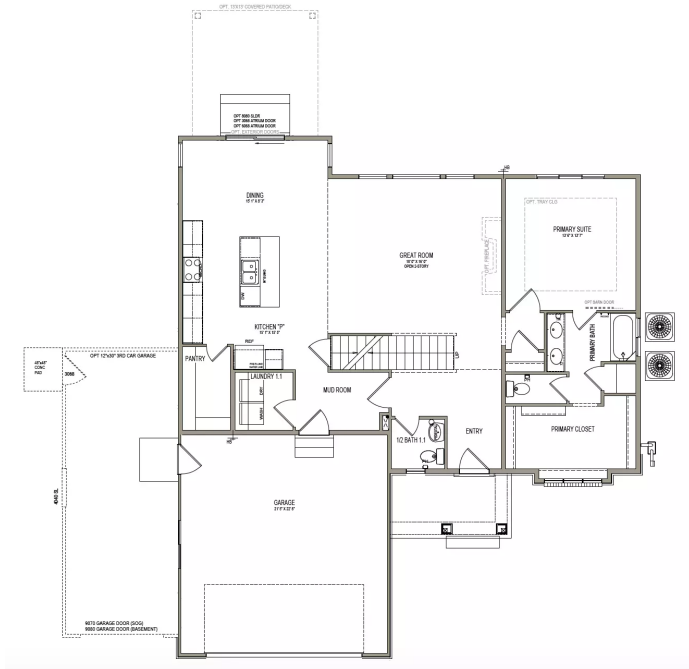


2,561 Finished Sq. Ft.

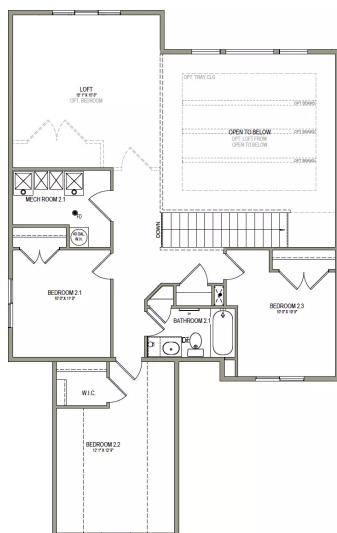


OFFICIAL
HOMEBUILDER
OF THE
UTAH JAZZ

MAIN LEVEL
1,473 SQ. FT.



UPPER LEVEL
1,087 SQ. FT.



UNFINISHED BASEMENT
1,364 SQ. FT.

