



THE SUMMERLYN AT CARSON RIDGE

1758 S 270 W
Salem, UT, 84653

VISIONARYHOMES.COM

FARMHOUSE



TRADITIONAL W/STUCCO



Scan for more info

ABOUT THE PLAN

With a modern and functional design, The Summerlyn rambler is a fan favorite and for good reason. Featuring 3 beds and 2-2.5 baths, with an open-concept main living space. With an exquisite owner's suite, showcasing a spacious walk-in closet and owner's bath. Convenient closet space is also designed throughout. The gourmet kitchen includes a large walk-in pantry and a kitchen island for all your prepping and cooking needs. The dining and family room connect with the kitchen for you and your family to enjoy spending time together, whether cooking, eating, or watching movies. An optional basement creates up to an additional 4 beds, 1 bath, storage space, and a recreation room for a total of 7 beds and 3 baths.

Call or text to make an appointment today!
801-921-5719



3-7 Bedrooms



2.5-3 Baths



2-3 Car Garage



1,967 Finished Sq. Ft.



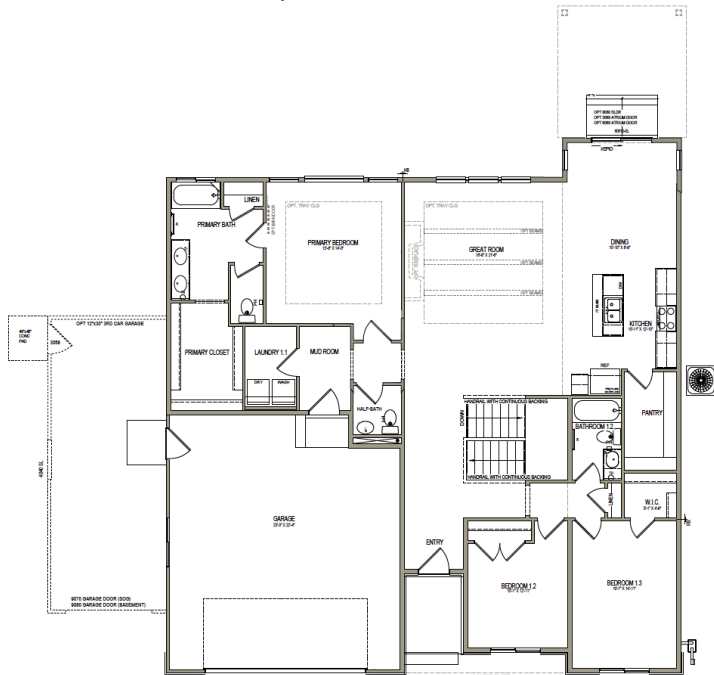
OFFICIAL
HOMEBUILDER
OF THE
UTAH JAZZ

THE SUMMERLYN



MAIN LEVEL

1,967 SQ. FT.



BASEMENT

1,838 SQ. FT.

