



# THE GLENDALE AT FENN FARMS

342 South 680 West  
American Fork, UT, 84074

VISIONARYHOMES.COM



FARMHOUSE



TRADITIONAL W/STUCCO



*Scan for more info*

## ABOUT THE PLAN

With a stylish exterior and functional design, our Glendale floor plan is a charmer. Off the main entry you'll discover a flex room and stairs leading to all the bedrooms upstairs. The main floor includes a large great room, dining, kitchen, and mudroom with a half bath. Upstairs hosts a spacious loft area, laundry room, two bedrooms and the owner's suite with an owner's bathroom and large walk-in closet.

3 Bedrooms

2.5 Baths

2 Car Garage

2,290 Finished Sq. Ft.

Call or text to make an appointment today!  
**801-516-4639**



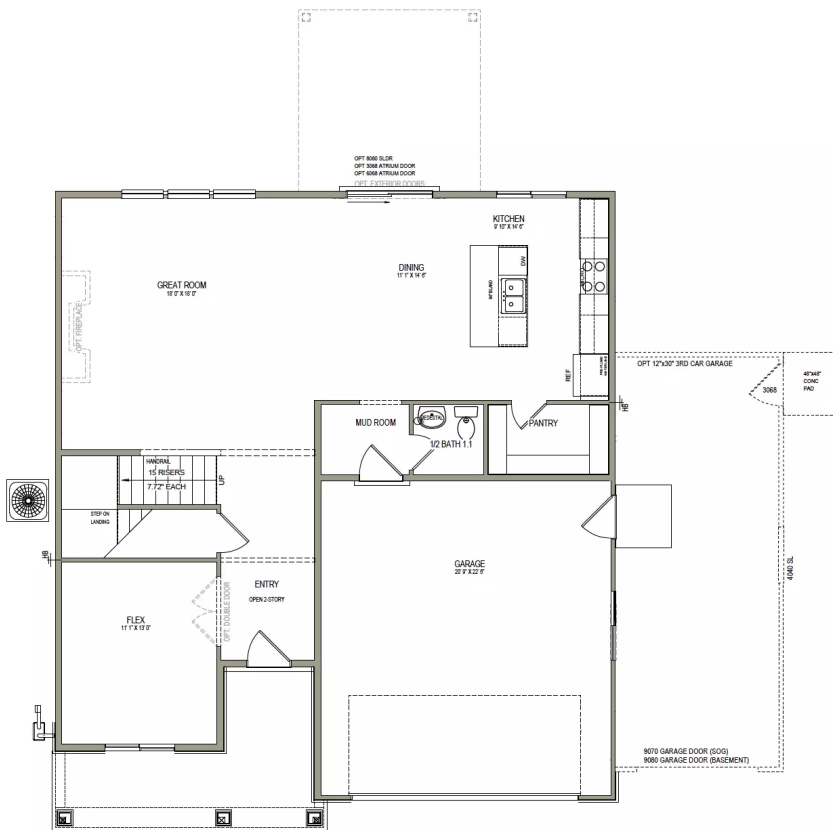
OFFICIAL  
HOMEBUILDER  
OF THE  
UTAH JAZZ

# THE GLENDALE



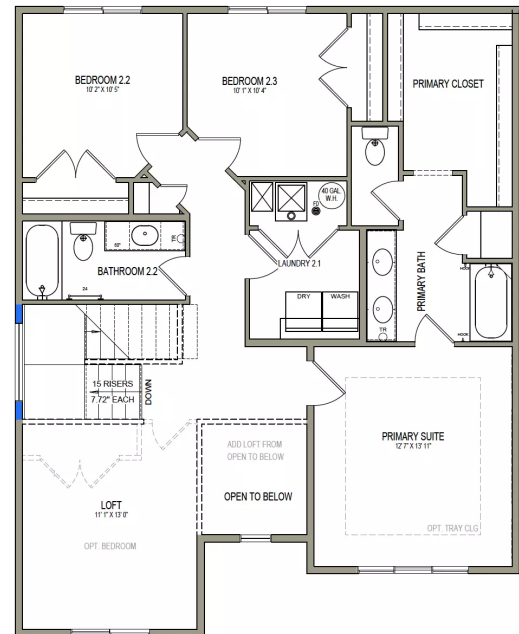
## MAIN LEVEL

1,152 SQ. FT.



## UPPER LEVEL

1,136 SQ. FT.



*\*No basement available in this community*

