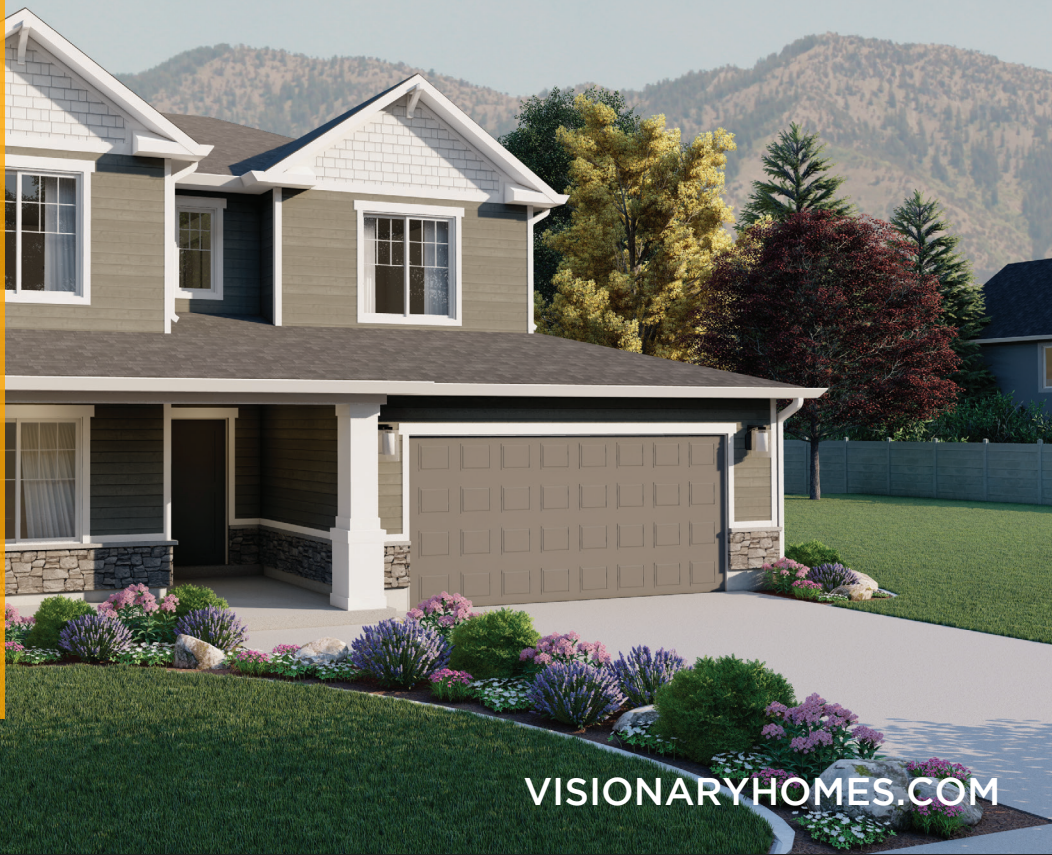




THE  
**GLENDALE**  
AT STILLCREEK

3340 North 3275 West  
Plain City, UT, 84404



VISIONARYHOMES.COM



*Scan for more info*

**ABOUT THE PLAN**

With a stylish exterior and functional design, our Glendale floor plan is a charmer. Off the main entry you'll discover a flex room and stairs leading to all the bedrooms upstairs. The main floor includes a large great room, dining, kitchen, and mudroom with a half bath. Upstairs hosts a spacious loft area, laundry room, two bedrooms and the owner's suite with an owner's bathroom and large walk-in closet. With a total of 3 bedrooms and 2.5 baths.

**3 Bedrooms**

**2.5 Baths**

**2 Car Garage**

**2,290 Finished Sq. Ft.**

Call or text to make an appointment today!  
**435-485-3954**



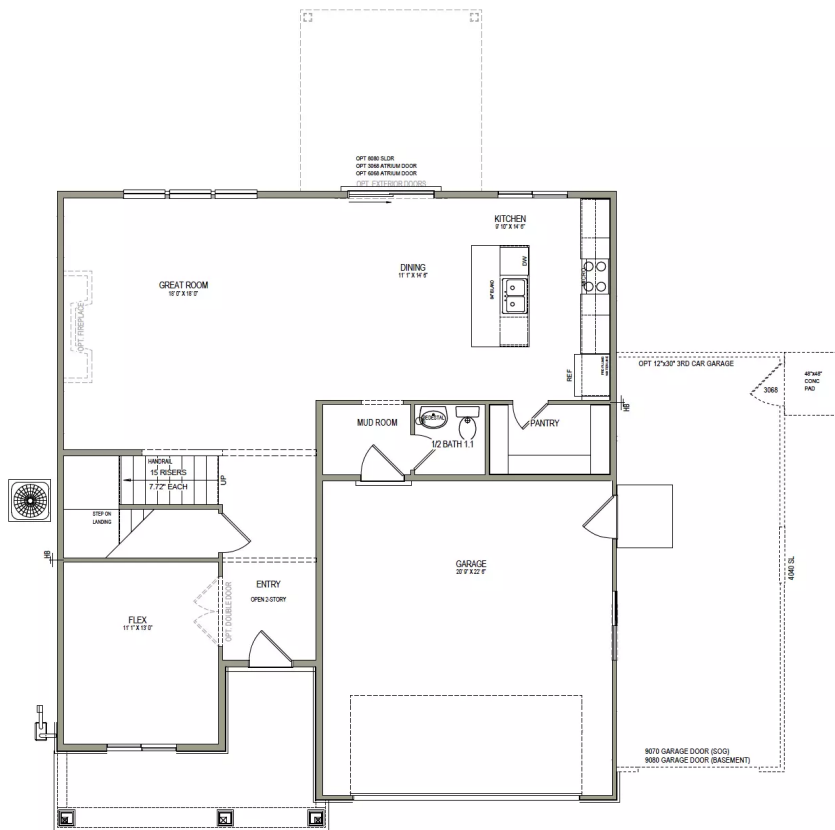
OFFICIAL  
**HOME BUILDER**  
OF THE  
UTAH JAZZ

# THE GLENDALE



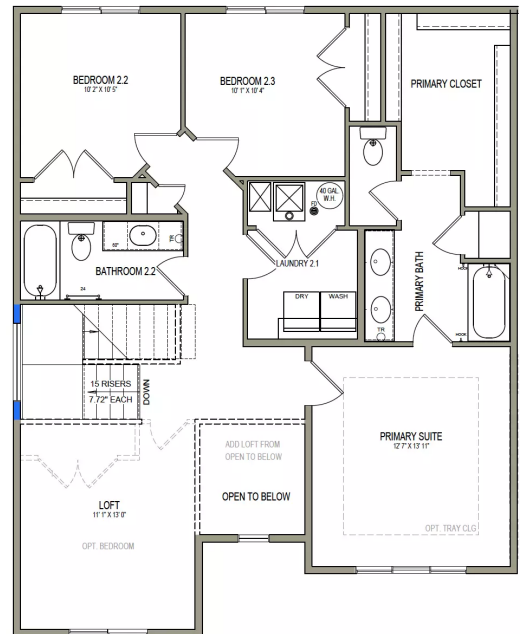
## MAIN LEVEL

1,152 SQ. FT.



## UPPER LEVEL

1,136 SQ. FT.



*\*No basement available in this community*

