



# THE LYNDHURST AT STILLCREEK

3340 North 3275 West  
Plain City, UT, 84404



CRAFTSMAN



FARMHOUSE



TRADITIONAL



*Scan for more info*

## ABOUT THE PLAN

A traditional home with a modern layout perfect for you and your family, The Lyndhurst is easy to call home. With 3 beds and 2 baths, and an open-concept main living space. A spacious family room open to the kitchen and dining features large windows for plenty of natural light into your home. A large walk-in pantry and island in the kitchen provide you with the perfect space for prepping and cooking for family meals spent together at the dining table. Find the owner's suite near the great room with a spacious owner's bath and walk-in closet, you'll enjoy most.

 **3 Bedrooms**

 **2 Baths**

 **2-3 Car Garage**

 **1,626 Finished Sq. Ft.**

Call or text to make an appointment today!  
**435-485-3954**



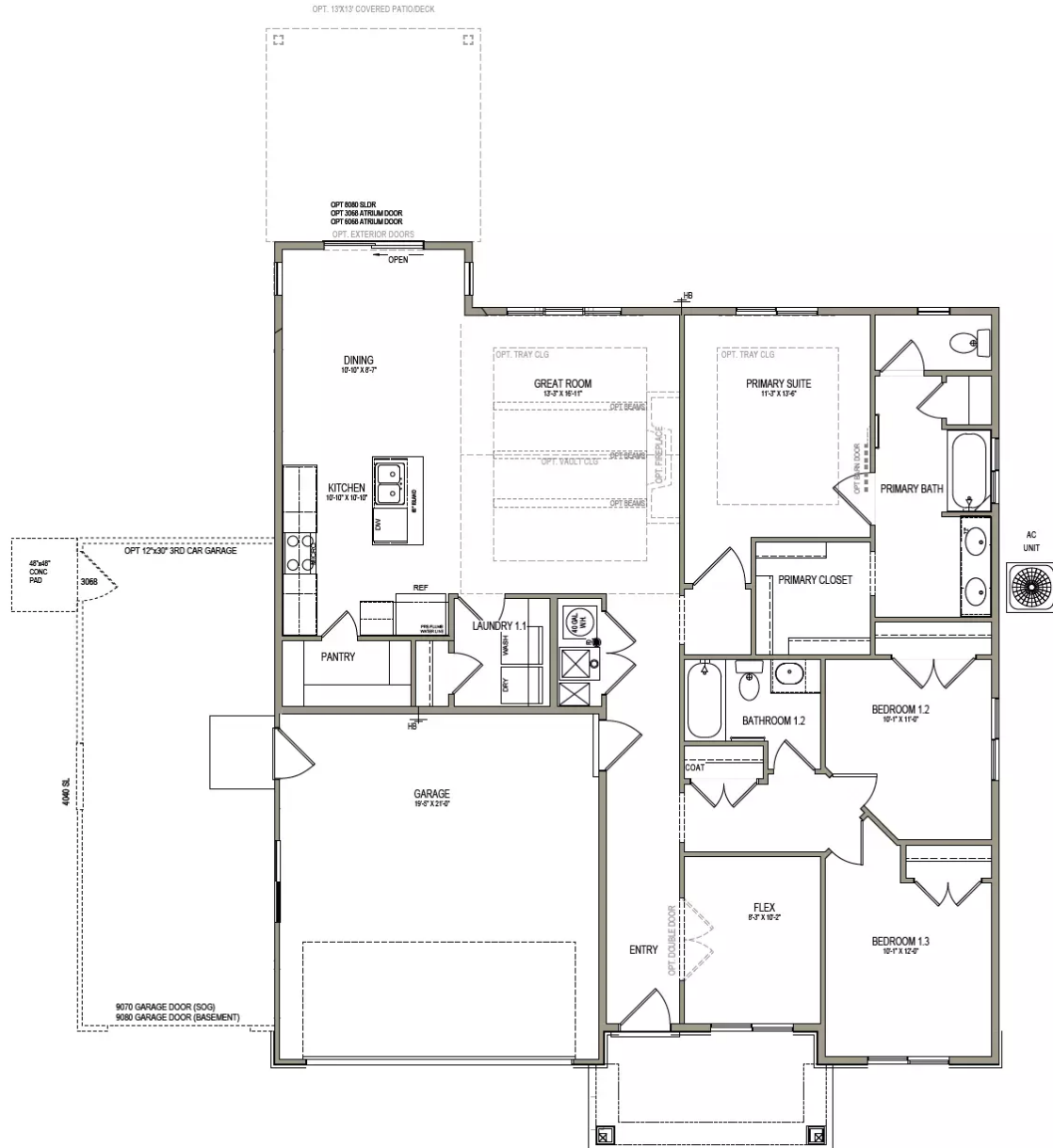
OFFICIAL  
HOME BUILDER  
OF THE  
UTAH JAZZ

# THE LYNDHURST



## MAIN LEVEL- SLAB ON GRADE

1,626 SQ. FT.



*\*No basement available in this community*

