



THE MADISON AT STILLCREEK

3340 North 3275 West
Plain City, UT, 84404

VISIONARYHOMES.COM

FARMHOUSE



TRADITIONAL W/STUCCO



Scan for more info

ABOUT THE PLAN

The simplicity of The Madison 2-story floor plan combine with a modern appeal for an overall stylish and functional design. Our Madison floor features 3 beds and 2.5 baths with an open-concept main living area. Featuring a large entrance welcomes you into the home. The flow from the family room into the kitchen and dining space make you feel right at home, with plenty of windows for natural light. A walk-in pantry in the kitchen provides lots of space for storing your kitchen essentials and food. Conveniently located off the garage is a mudroom and powder room. Step upstairs to discover a loft area near an open to below view of the front door, which creates an open and airy feel to the home you'll love. Feel ultimate relaxation when in your owner's suite with a walk-in closet and owner's bath. With two bedrooms, one with a walk-in closet, also upstairs.

Call or text to make an appointment today!
801-515-2401



3 Bedrooms



2.5 Baths



2-3 Car Garage



1,950 Finished Sq. Ft.



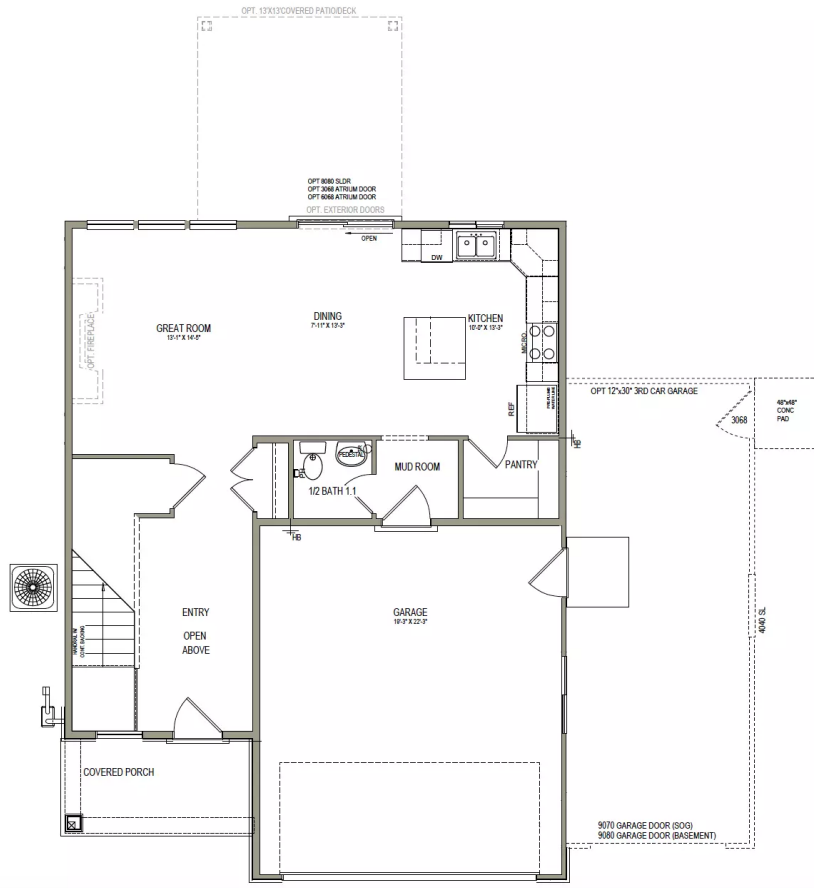
OFFICIAL
HOMEBUILDER
OF THE
UTAH JAZZ

THE MADISON



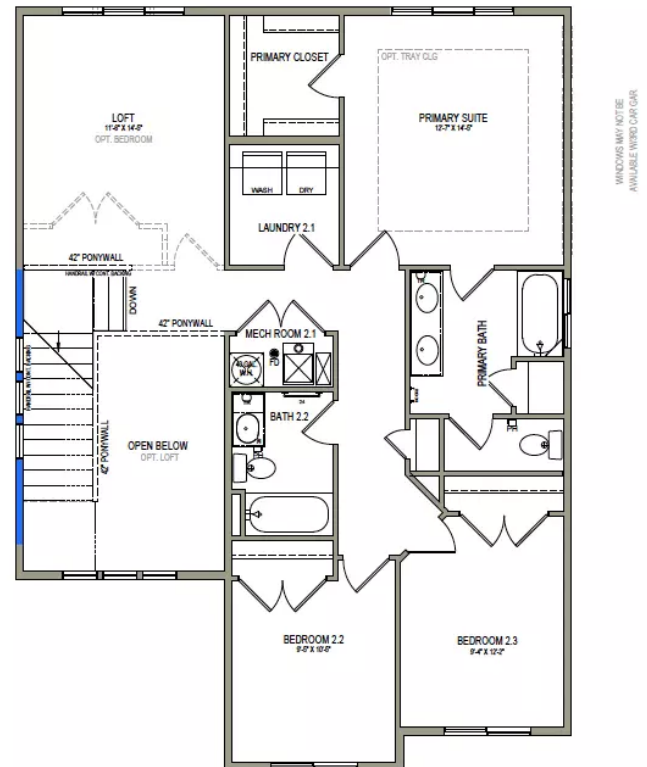
MAIN LEVEL

791 SQ. FT.



UPPER LEVEL

1,158 SQ. FT.



****No basement available in this community***



3340 N 3270 W, Plain City, UT, 84404 | visionaryhomes.com | **435.485.3954**