



THE MAPLE AT STILLCREEK

3340 North 3275 West
Plain City, UT, 84404

VISIONARYHOMES.COM

FARMHOUSE



TRADITIONAL W/STUCCO



Scan for more info

ABOUT THE PLAN

The Maple two-story floor plan is one of our latest designs created specifically with your family in mind. The Maple showcases a stylish design with 3-4 bedrooms, 2.5 bathrooms, and 2,254 total square feet. This is one of our most open floor plans and is designed with homebuyer preferences in mind. As you walk inside you'll find the spacious great room and flex room. The dining area and kitchen offer ample room to enjoy time with your family and entertain family and friends. The main floor also features a sizeable mudroom, pantry, and 1/2 bathroom as you enter and exit the garage. One of the highlights of this home is the upper level, where you choose whether you would like the 3 bedrooms with a large loft or if you would like to transform the loft into a fourth bedroom. The Maple floor plan was built to suit your family's needs and lifestyle preferences - Built for Living, Built for You.

Call or text to make an appointment today!
435-485-3954



3 Bedrooms



2.5 Baths



2-3 Car Garage



2,254 Finished Sq. Ft.



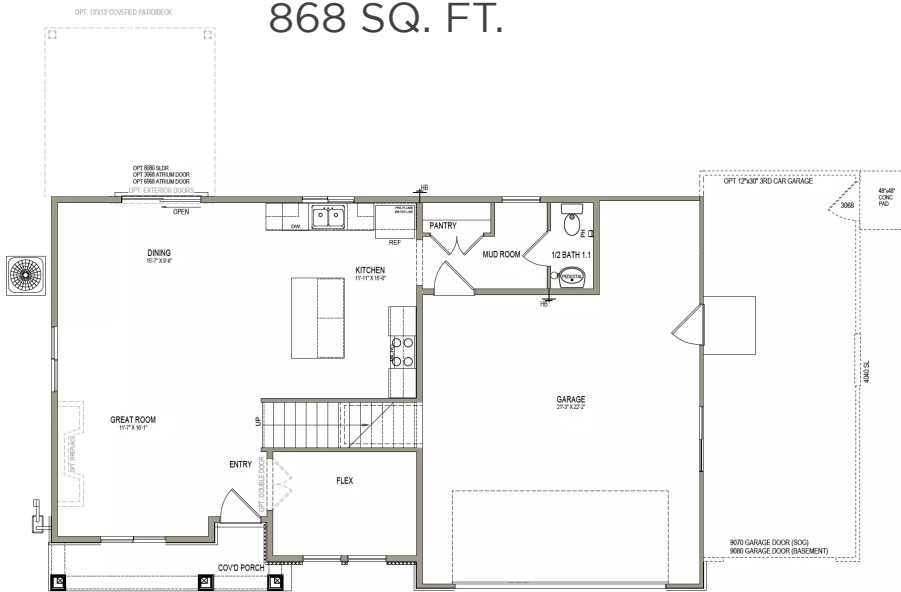
OFFICIAL
HOME BUILDER
OF THE
UTAH JAZZ

THE MAPLE



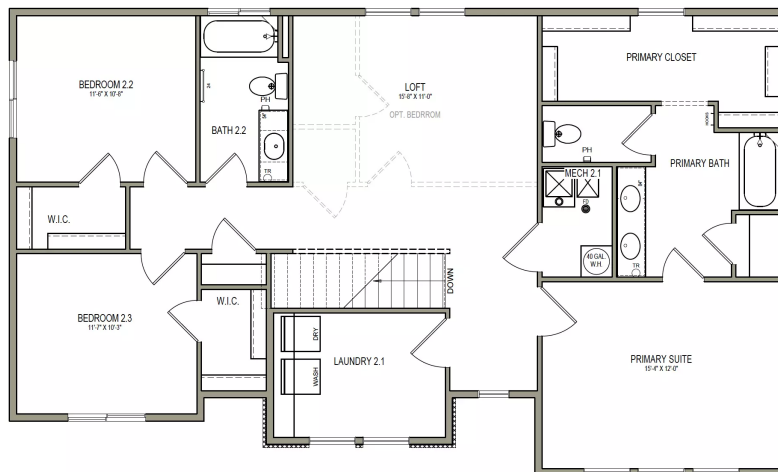
MAIN LEVEL

868 SQ. FT.



UPPER LEVEL

1,386 SQ. FT.



****No basement available in this community***



3340 N 3270 W, Plain City, UT, 84404 | visionaryhomes.com | **435.485.3954**