



THE
SUMAC
AT STILLCREEK

3340 North 3275 West
Plain City, UT, 84404



VISIONARYHOMES.COM



Scan for more info

ABOUT THE PLAN

One of our most popular floor plans designs, everything about The Sumac 2-story floor plan is stunning with 4 beds and 2.5 baths. Floor to ceiling windows in the family room bring plenty of natural light into the space, for a bright and cozy space leading into the kitchen and dining. A walk-in pantry and island to the kitchen provide both storage and counter space. Discover the owner's suite with gorgeous windows, an owner's bath, and walk-in closet. Up the stairs, a loft which is open to below with railing invites the light in from the family room floor to ceiling windows, and can be used as a lounge or study space. With three bedrooms upstairs, two of which feature walk-in closets. Create additional living space with the basement, for more bedrooms, a bathroom, storage space, and a recreation room for game and movie nights.

Call or text to make an appointment today!
435-485-3954

4 Bedrooms

2.5 Baths

2-3 Car Garage

2,561 Finished Sq. Ft.

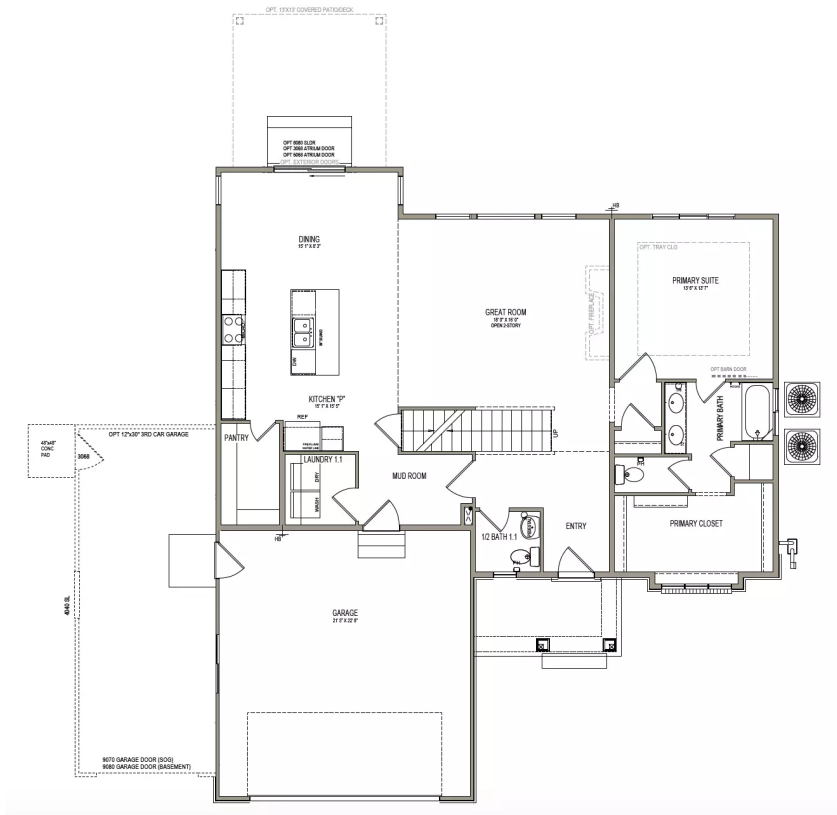


OFFICIAL
HOME BUILDER
OF THE
UTAH JAZZ

THE SUMAC

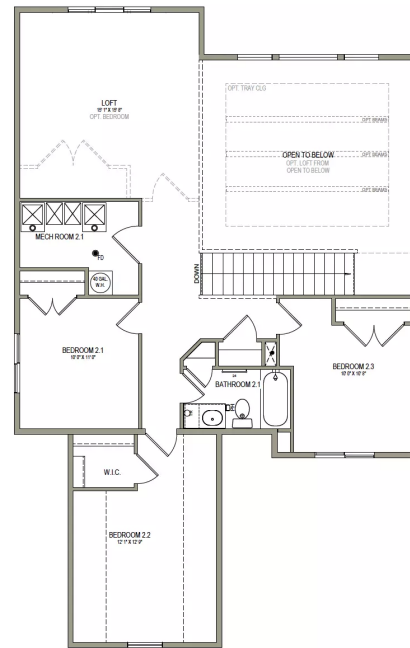
MAIN LEVEL

1,473 SQ. FT.



SECOND LEVEL

1,087 SQ. FT.



**No basement available in this community*