



# THE ABERDEEN AT SUNRISE RANCH

2041 West Pinnacle Avenue  
Mapleton, UT, 84664

VISIONARYHOMES.COM

FARMHOUSE



TRADITIONAL W/STUCCO



*Scan for more info*

## ABOUT THE PLAN

The Aberdeen floor plan showcases a stylish and functional design with an open concept layout, flex room off the entry, mudroom and half bath near the garage, and a walk-in pantry within the kitchen. With 4 bedrooms, 2.5 baths, and a 2-car garage, this floor plan offers you and your family a space you'll love. Upstairs you'll discover a loft space, spacious owner's suite and bath, convenient upstairs laundry, bedrooms, and a bathroom.

Call or text to make an appointment today!  
**801-978-5749**



4-7 Bedrooms



2.5-3 Baths



2-3 Car Garage



2,501 Finished Sq. Ft.



**visionary**  
HOMES



OFFICIAL  
**HOMEBUILDER**  
OF THE  
UTAH JAZZ

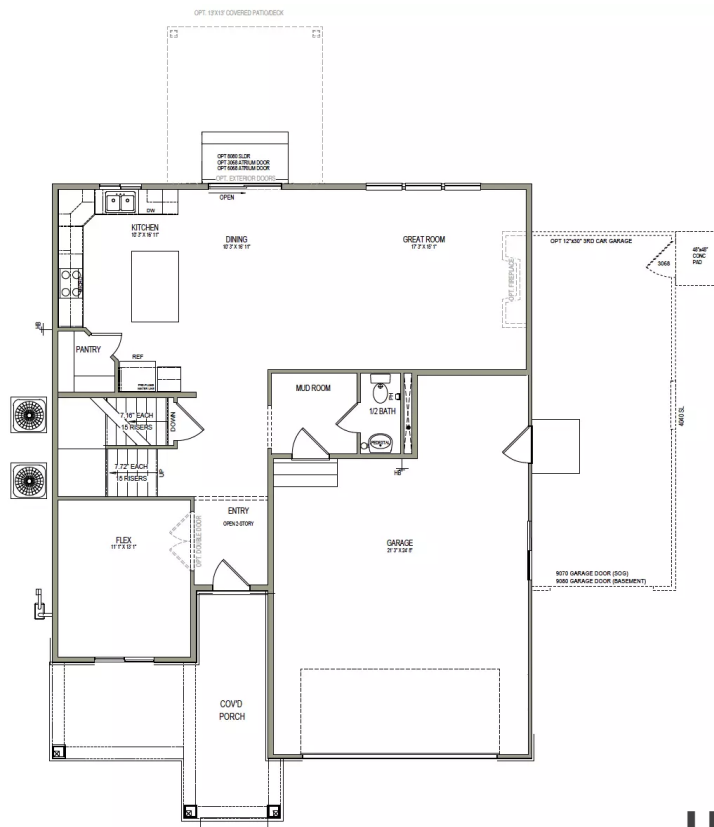


# THE ABERDEEN



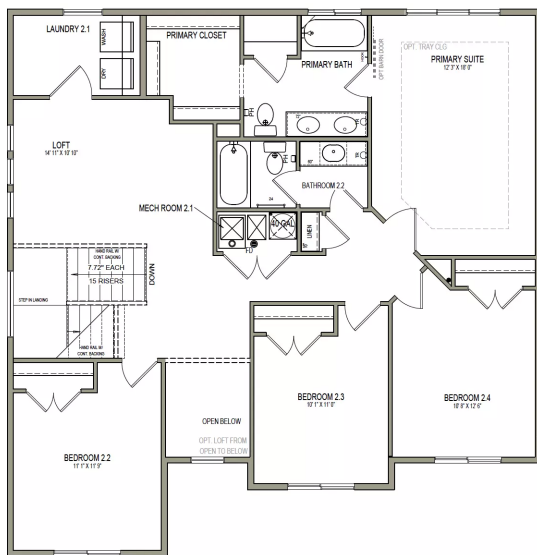
## MAIN LEVEL

1,104 SQ. FT.



## UPPER LEVEL

1,397 SQ. FT.



## UNFINISHED BASEMENT

1,006 SQ. FT.

