



THE
BENTON
AT SUMMER
SPRINGS

1638 North 840 West
Salem, UT, 84653



ABOUT THE PLAN

The Benton townhome floor plan includes plenty of windows for natural lighting to your space. Featuring 3 beds and 2.5, this townhome welcomes you in through the entry to the open living area with the family room, dining, and kitchen. A walk-in pantry and kitchen island give you the space you need to prep and cook for you and your family. Upstairs you'll discover the owner's suite featuring an owner's bath with a spacious walk-in closet, a loft to turn into anything from a study to lounge space, bedrooms, and a convenient laundry room.



Scan for more info



3 Bedrooms



2.5 Baths



2 Car Garage



1,539 Finished Sq. Ft.

Call or text to make an appointment today!
435-246-4785

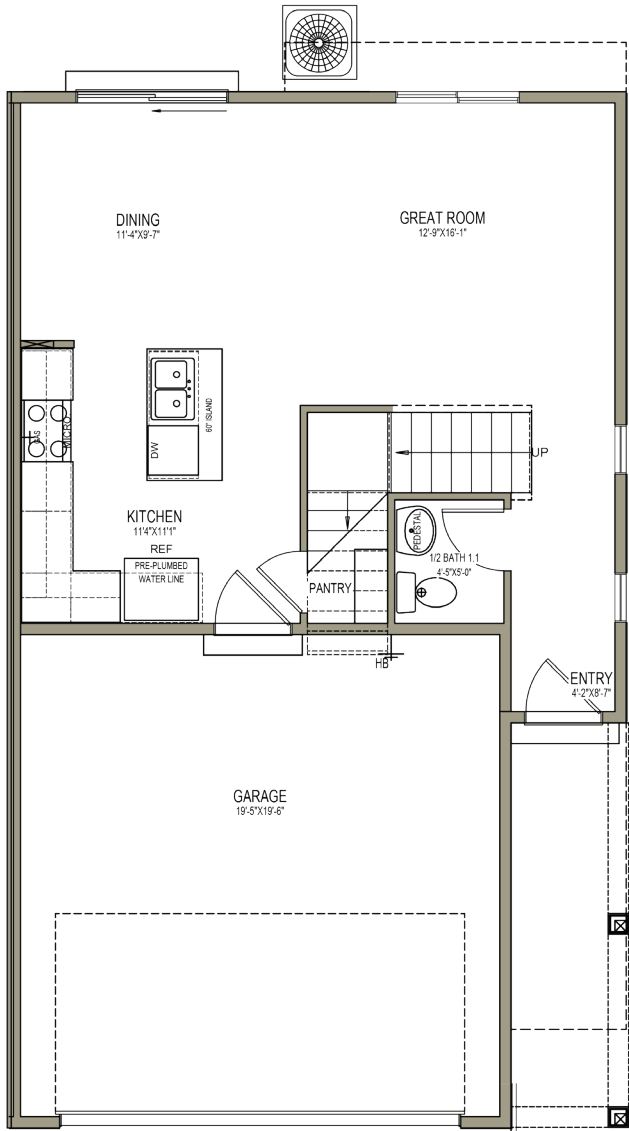


OFFICIAL
HOME BUILDER
OF THE
UTAH JAZZ

THE BENTON

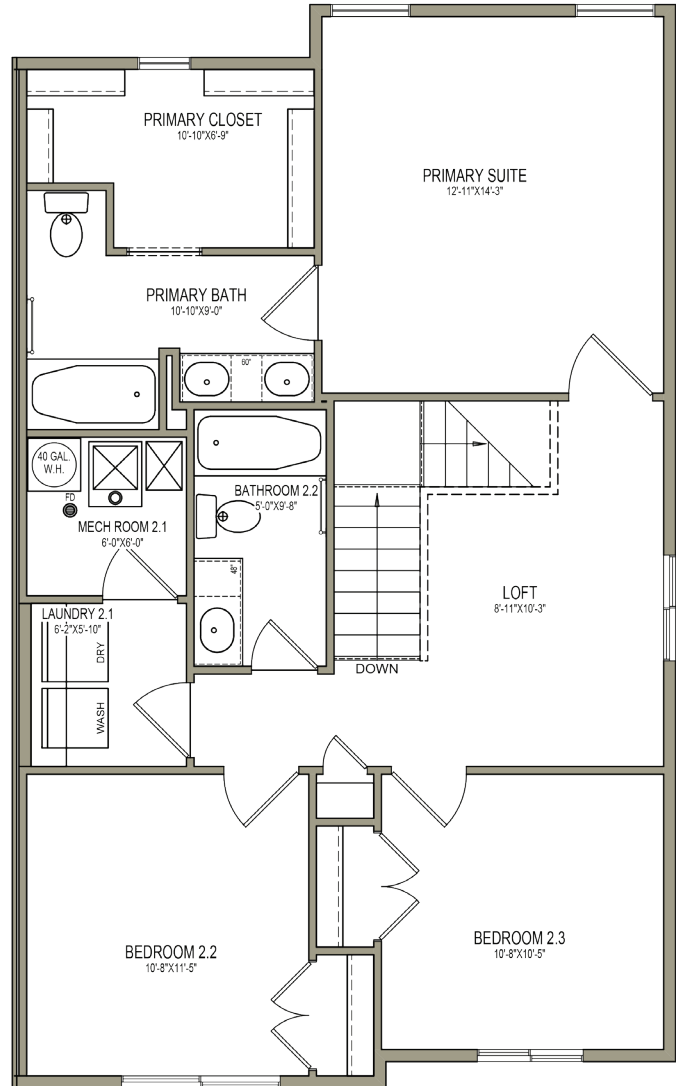
MAIN LEVEL

560 SQ. FT.



UPPER LEVEL

979 SQ. FT.



**No basement available in this community*