



THE
REMINGTON
AT MORNING
MEADOWS

5300 West 4000 South
Hooper, UT, 84315



VISIONARYHOMES.COM



FARMHOUSE



TRADITIONAL W/STUCCO



Scan for more info

ABOUT THE PLAN

With 4 bedrooms and 2.5 bathrooms, the Remington is the perfect spacious floor plan for a home that will meet the needs of your family for years to come. Upon entry, you'll walk into the main living area with floor-to-ceiling windows bringing in plenty of natural light and beauty. A gourmet kitchen features a walk-in pantry and plenty of counter space for all your cooking activities. The open staircase gives this popular floor plan a spacious feel. The owner's suite brings luxury and relaxation to another level with a beautiful bath and a massive walk-in closet with windows. The upper level also features an open loft, three medium sized bedrooms with three featuring walk-in closets, and a second full bathroom.

4 Bedrooms

2.5 Baths

2-3 Car Garage

2,876 Finished Sq. Ft.

Call or text to make an appointment today!
435-236-2512



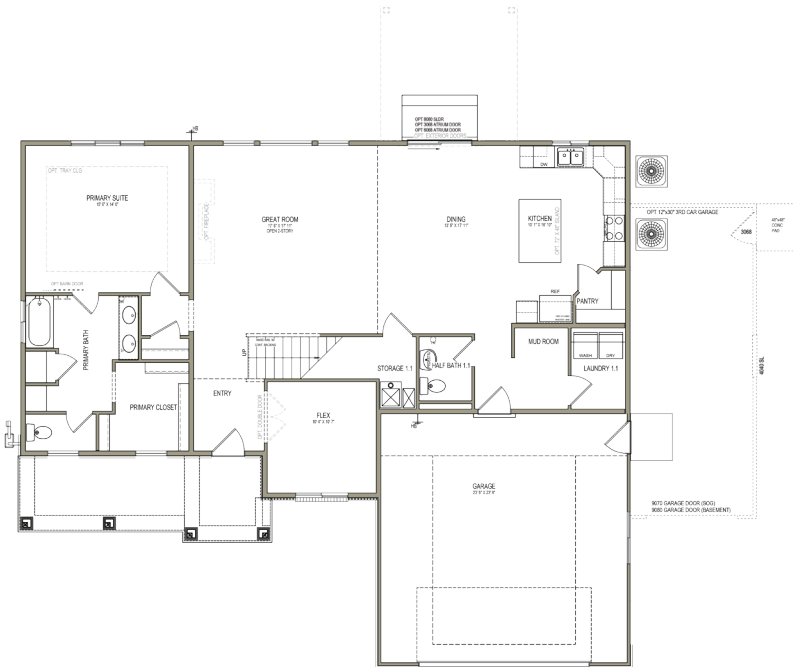
OFFICIAL
HOME BUILDER
OF THE
UTAH JAZZ

THE REMINGTON



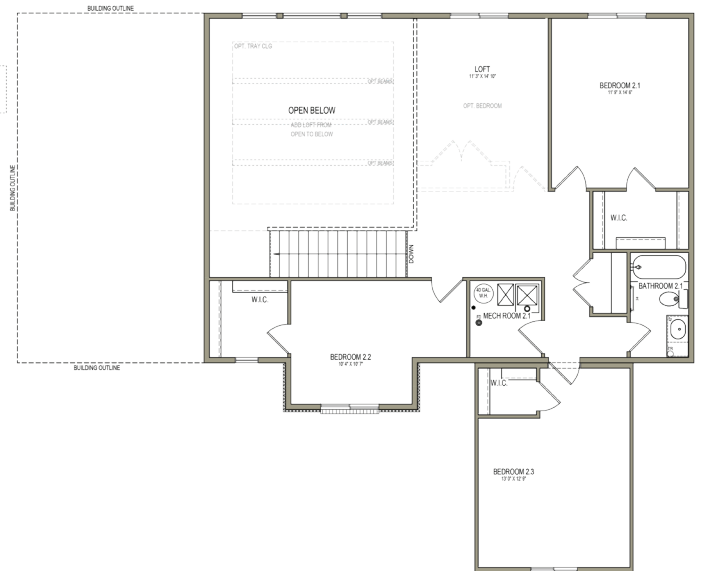
MAIN LEVEL

1,690 SQ. FT.



SECOND LEVEL

1,185 SQ. FT.



**No basement available in this community*