



THE
SUMAC
AT MORNING
MEADOWS

5300 West 4000 South
Hooper, UT, 84315



VISIONARYHOMES.COM



Scan for more info

ABOUT THE PLAN

With 4 beds and 2.5 bathrooms, the Sumac floor plan is one of our most popular options for families who'd like to elevate their home and upgrade to additional space. Every time you walk inside you'll be greeted with floor to ceiling windows in the family room, casting natural light into the entire space for a bright and cozy atmosphere that suffuses into the kitchen and dining room. Up the stairs, a loft which is open to below with railing invites the light in from the family room floor to ceiling windows, and can be used as a lounge or study space. A walk-in pantry and island to the kitchen provide both storage and counter space for all your cooking needs. Upstairs you'll find three beautiful bedrooms, two of which feature walk-in closets. In addition to these three rooms is the more spacious owner's suite with large windows, an owner's bath, and walk-in closet with an additional window for natural light.

Call or text to make an appointment today!
435-236-2512

4 Bedrooms

2.5 Baths

2-3 Car Garage

2,561 Finished Sq. Ft.



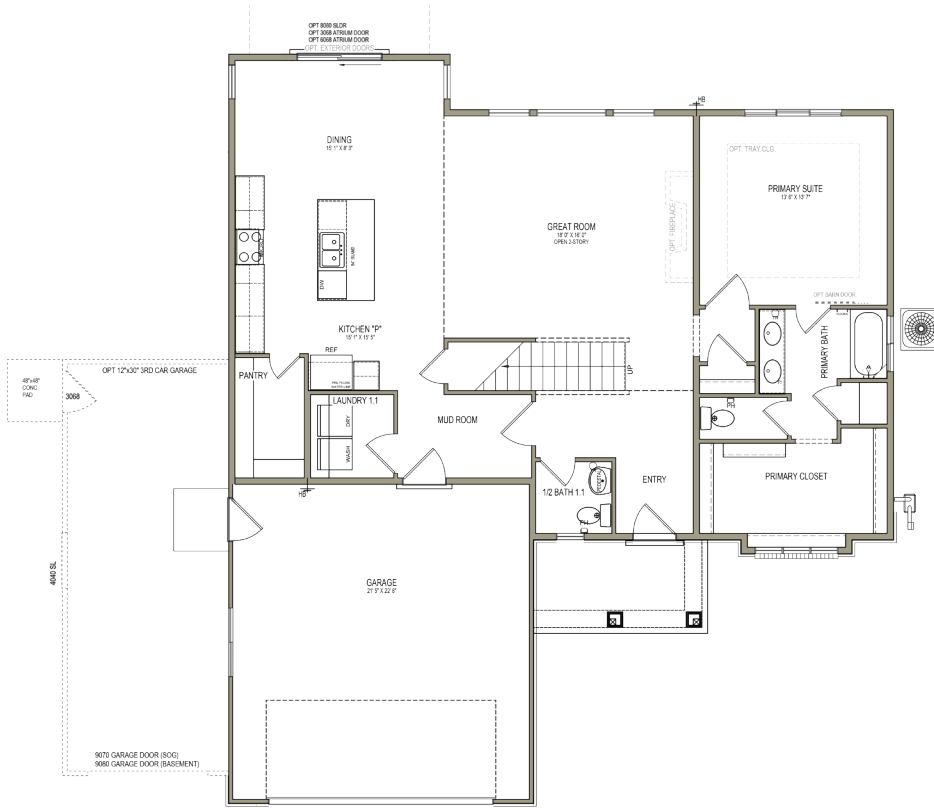
OFFICIAL
HOME BUILDER
OF THE
UTAH JAZZ

THE SUMAC



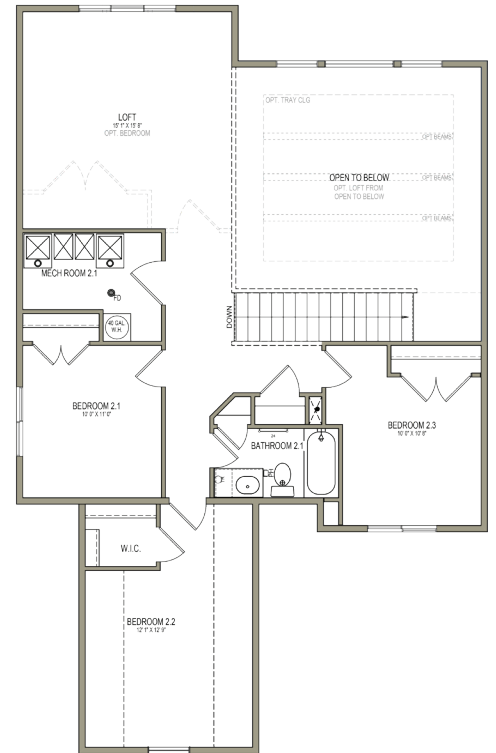
MAIN LEVEL

1,473 SQ. FT.



SECOND LEVEL

1,087 SQ. FT.



**No basement available in this community*

