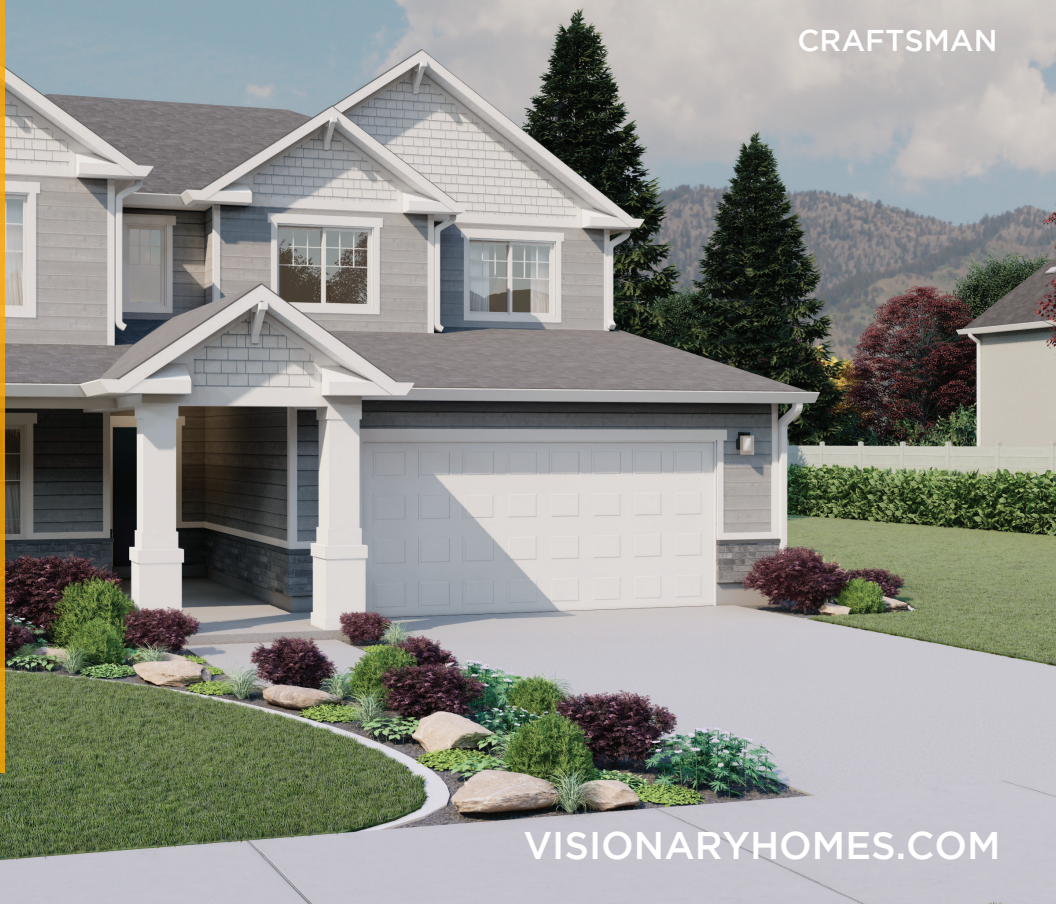




THE
ABERDEEN
AT RIVER'S
EDGE

240 North 775 East
Tremonton, UT, 84337



VISIONARYHOMES.COM



FARMHOUSE



TRADITIONAL W/STUCCO



Scan for more info

ABOUT THE PLAN

With an open concept layout, 4 bedrooms, 2.5 baths, and a 2-car garage, the Aberdeen is perfect for you and your family. The Aberdeen also includes a flex room off the entry, a mudroom and a half bath near garage, as well as walk-in pantry within the kitchen. Upstairs you'll discover a loft space, spacious owner's suite and bath, convenient upstairs laundry, bedrooms, and a bathroom. You and your family will love every ordinary life moment in this uplifting, spacious layout!

4-7 Bedrooms

2.5-3 Baths

2-3 Car Garage

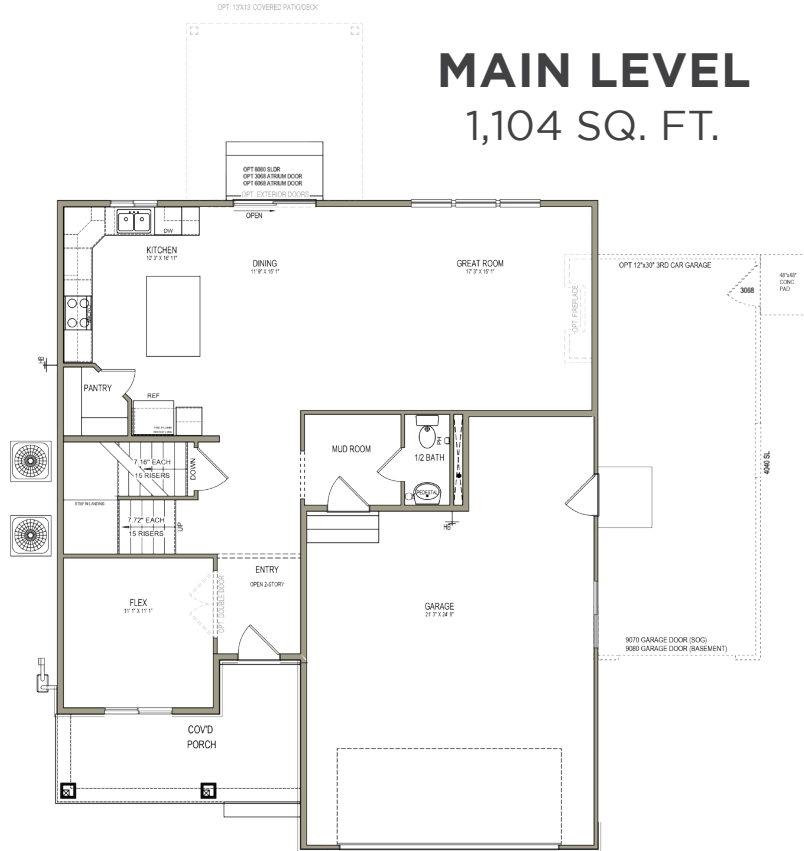
2,501 Finished Sq. Ft.

Call or text to make an appointment today!
435-465-0075

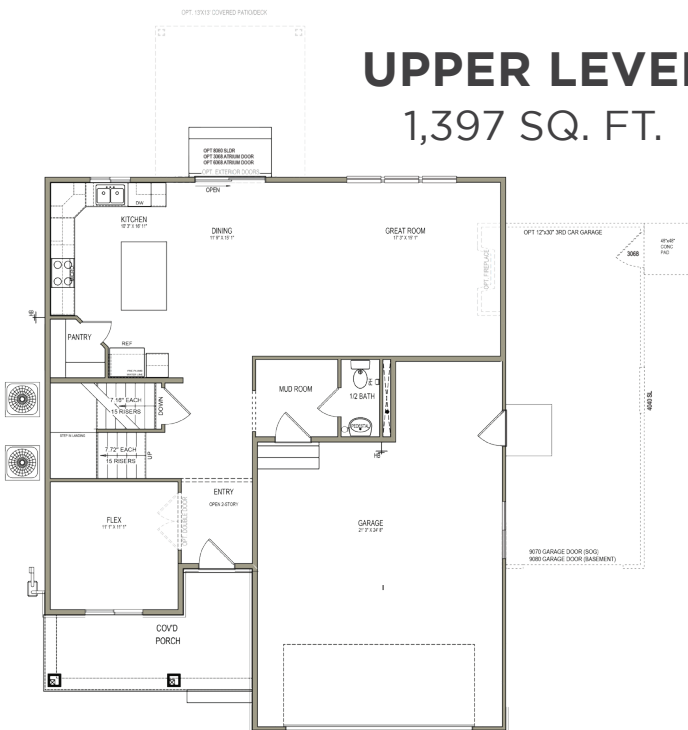


OFFICIAL
HOMEBUILDER
OF THE
UTAH JAZZ

MAIN LEVEL 1,104 SQ. FT.



UPPER LEVEL 1,397 SQ. FT.



UNFINISHED BASEMENT 1,006 SQ. FT.

