



THE  
**GLENDALE**  
AT RIVER'S  
EDGE

240 North 775 East  
Tremonton, UT, 84337



VISIONARYHOMES.COM



FARMHOUSE



TRADITIONAL W/STUCCO



*Scan for more info*

**ABOUT THE PLAN**

With a stylish exterior and functional design, our Glendale floor plan is built with families in mind. The main floor includes a large great room, dining, kitchen, and mudroom with a half bath. Off the main entry you'll discover a flex room and stairs leading to the second level bedrooms. Upstairs hosts a spacious loft area, laundry room, two bedrooms and the owner's suite with an owner's bathroom and large walk-in closet. With a total of 3 bedrooms and 2.5 baths, along with a spacious, open-concept design, this floor plan will accommodate the needs of your family for years to come and create a peaceful atmosphere for life's moments.

**3-7 Bedrooms**

**2.5-3 Baths**

**2-3 Car Garage**

**2,290 Finished Sq. Ft.**

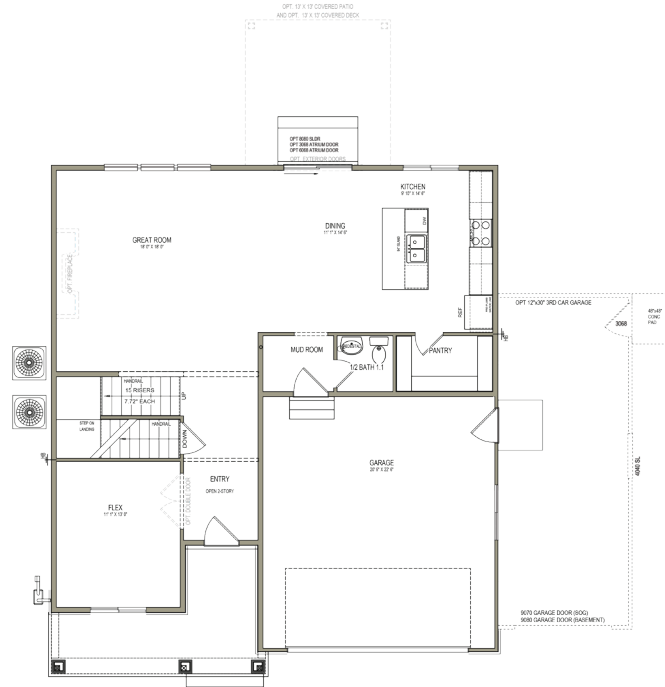
Call or text to make an appointment today!  
**435-465-0075**



OFFICIAL  
**HOME BUILDER**  
OF THE  
UTAH JAZZ

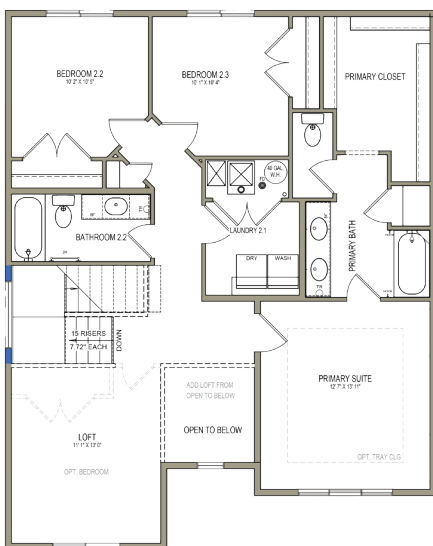
## MAIN LEVEL

1,152 SQ. FT.



## UPPER LEVEL

1,136 SQ. FT.



## UNFINISHED BASEMENT

1,052 SQ. FT.

