



THE  
**SUMAC**  
AT RIVER'S  
EDGE

240 North 775 East  
Tremonton, UT, 84337



VISIONARYHOMES.COM



FARMHOUSE



TRADITIONAL W/STUCCO



*Scan for more info*

**ABOUT THE PLAN**

Everything about The Sumac 2-story floor plan is designed to give you and your family maximum comfort, with 4 beds and 2.5 baths. Floor to ceiling windows in the family room bring plenty of natural light into the space, for a bright and cozy atmosphere that suffuses the kitchen and dining room as well. A walk-in pantry and island to the kitchen provide both storage and counter space for all your cooking needs. The owner's suite, situated on the main level for privacy away from the upstairs bedrooms, features gorgeous windows, a spacious bath, and walk-in closet lit with natural light. Up the stairs, an open loft balcony invites the light in from the family room floor to ceiling windows, creating the perfect ambiance for a lounge or study space. The three additional bedrooms are situated upstairs, all with plenty of space and two of with walk-in closets.

**Call or text to make an appointment today!**  
**435-465-0075**

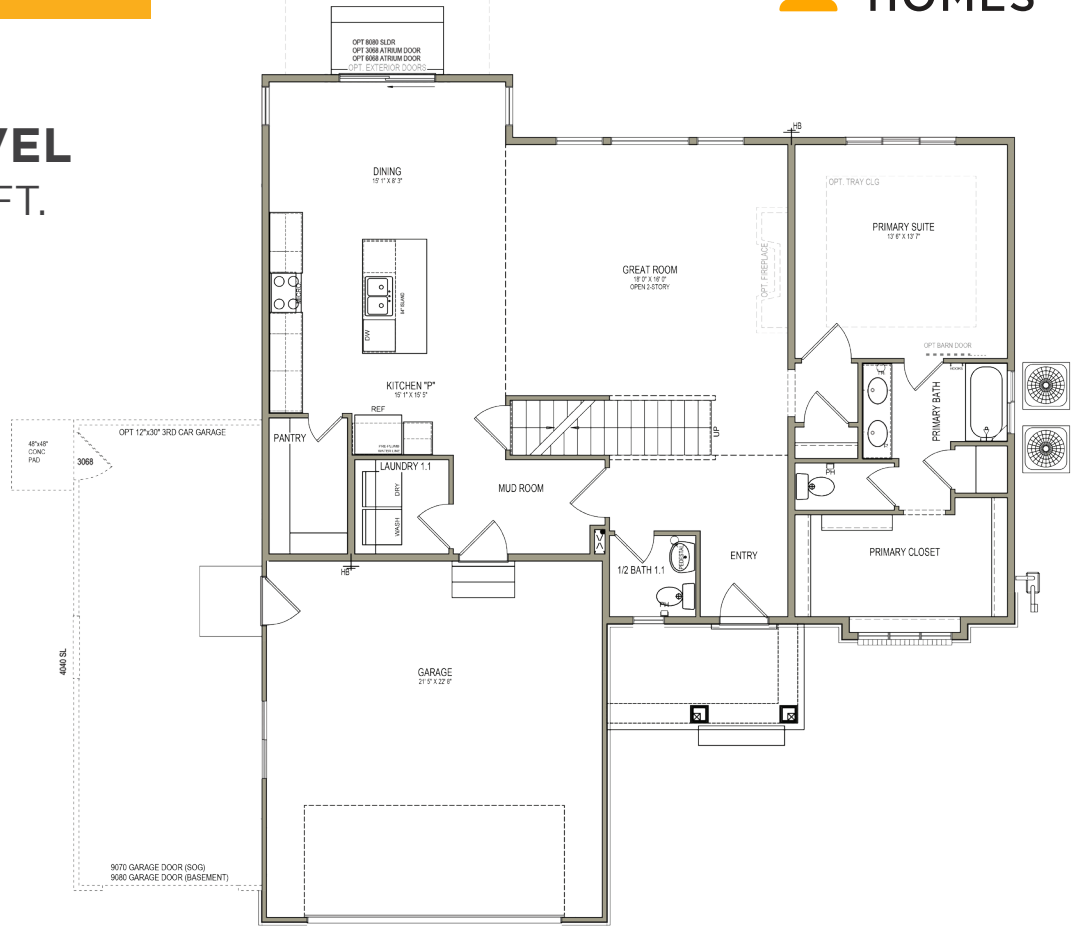
- 4-7 Bedrooms**
- 2.5-4 Baths**
- 2-3 Car Garage**
- 2,561 Finished Sq. Ft.**



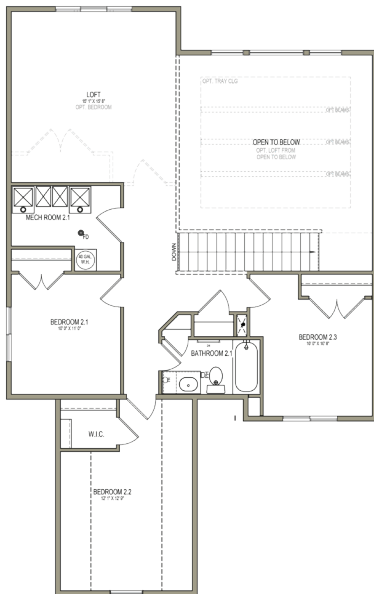
OFFICIAL  
**HOME BUILDER**  
OF THE  
UTAH JAZZ

# THE SUMAC

## MAIN LEVEL 1,473 SQ. FT.



## UPPER LEVEL 1,087 SQ. FT.



## UNFINISHED BASEMENT 1,364 SQ. FT.

