



THE HILDDALE AT BEVAN ESTATES

705 North 200 East
Tooele, UT, 84074



VISIONARYHOMES.COM



FARMHOUSE



TRADITIONAL W/STUCCO



Scan for more info

ABOUT THE PLAN

Step into timeless comfort and functionality with the Hilldale rambler floor plan, featuring 3 beds and 2 baths. As you enter, you're greeted by an inviting open-concept living area that seamlessly integrates the family room, kitchen, and dining space. Whether you're cooking up a storm, unwinding with loved ones, or hosting gatherings, this central hub facilitates every aspect of your lifestyle. A hallway off the kitchen leads conveniently into the bedrooms, laundry, and bathroom. With the bedrooms facing the back of the home and the owner's suite on the other side for a secluded, peaceful atmosphere so you can relax and unwind, including a spacious owner's bath. Each bedroom features large walk-in closets for additional space for your everyday things. If you're seeking a home that will accommodate the needs of you and your family for years to come, the Hilldale is just right for you!

Call or text to make an appointment today!
801-985-6448

3-6 Bedrooms

2-3 Baths

2-3 Car Garage

1,263 Finished Sq. Ft.



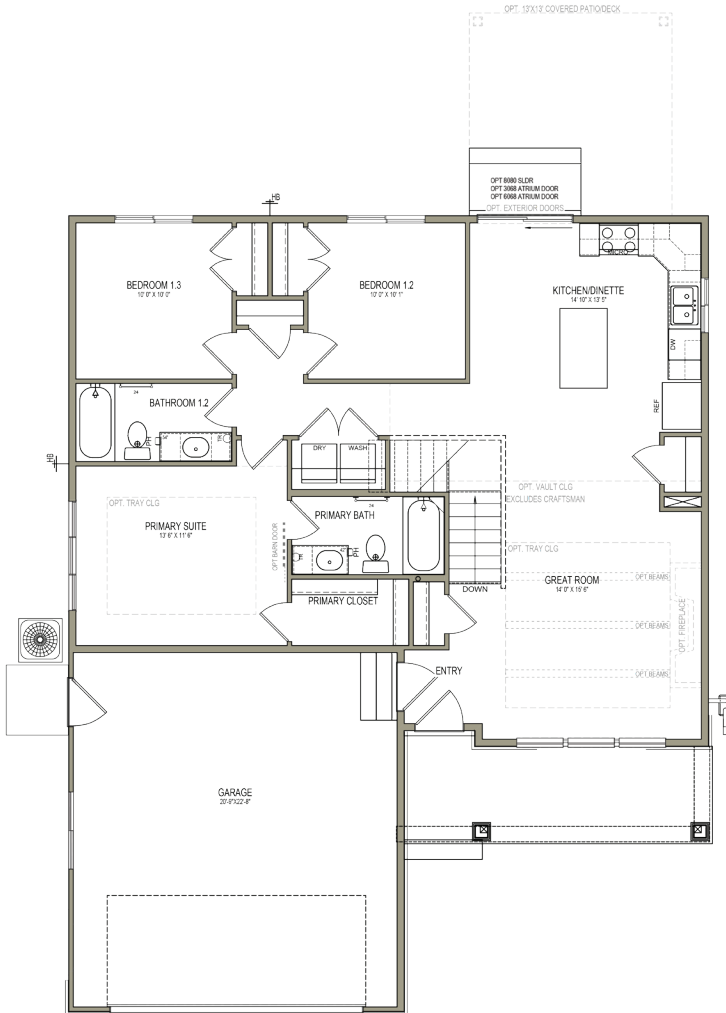
OFFICIAL
HOMEBUILDER
OF THE
UTAH JAZZ

THE HILDALE



MAIN LEVEL

1,263 SQ. FT.



BASEMENT

1,169 SQ. FT.

