



THE
SADDLEWOOD
 AT BEVAN
 ESTATES

960 W 800 N
 Tremonton, UT, 84337



VISIONARYHOMES.COM



FARMHOUSE



TRADITIONAL



Scan for more info

ABOUT THE PLAN

Step into the timeless charm and practicality of the Saddlewood 2-story floor plan, meticulously designed to accommodate your growing family's needs for years to come. Featuring 3 beds and 2.5 baths, The Saddlewood 2-story floor plan has an open-concept main living space. The family room, kitchen, and dining area seamlessly blend together to create a warm and inviting atmosphere that fosters a sense of family connection and can also accommodate many guests. At the top of the stairs you'll discover a loft space that's open to below to the entrance for an airy and bright addition in the home. A laundry room is centered on the second floor for ultimate convenience to your weekly routine. The spacious owner's suite upstairs invites you in with its large windows, owner's bath, and spacious walk-in closet.

3-4 Bedrooms

2.5-3 Baths

2-3 Car Garage

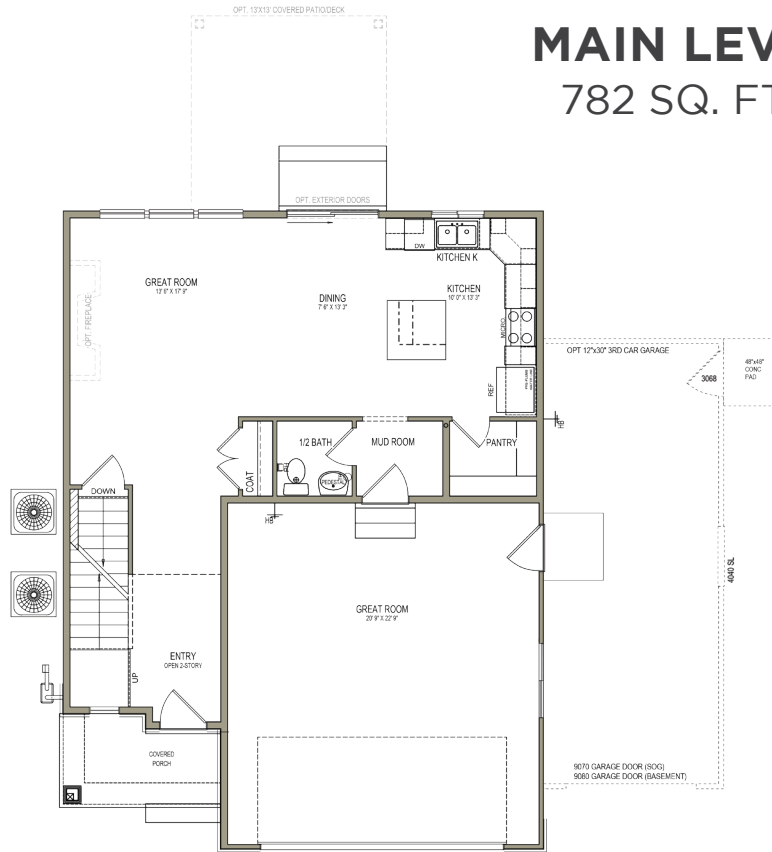
1,878 Finished Sq. Ft.

Call or text to make an appointment today!
435-246-4785

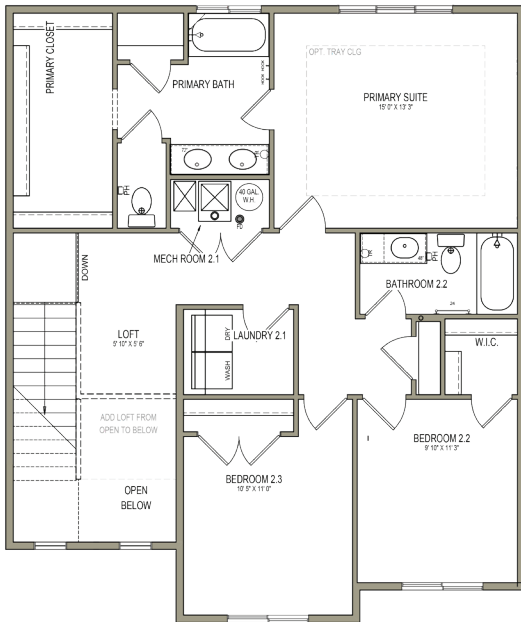


OFFICIAL
HOME BUILDER
 OF THE
 UTAH JAZZ

MAIN LEVEL 782 SQ. FT.



UPPER LEVEL 1,096 SQ. FT.



UNFINISHED BASEMENT 700 SQ. FT.

