



THE  
**SPRINGHILL**  
AT BEVAN  
ESTATES

705 North 200 East  
Tooele, UT, 84074



VISIONARYHOMES.COM



FARMHOUSE



TRADITIONAL



*Scan for more info*

**ABOUT THE PLAN**

With a timeless style and functional layout, you and your family will love The Springhill 2-story floor plan. Featuring 3 beds and 2.5 baths, with an open-concept layout on the main level perfect for family dinners, movie nights, games, and cooking. A spacious owner's suite upstairs with an owner's bath and large walk-in closet provide the perfect space to relax and unwind. The staircase open to below brings in additional light to the loft space upstairs, near the bedrooms, with a walk-in closet for storing anything from board games to extra towels and blankets. Experience the perfect blend of style, functionality, and value in The Springhill, a home that promises to be the cornerstone of your family's memories for generations to come.

Call or text to make an appointment today!  
**801-985-6448**

3-6 Bedrooms

2.5-3 Baths

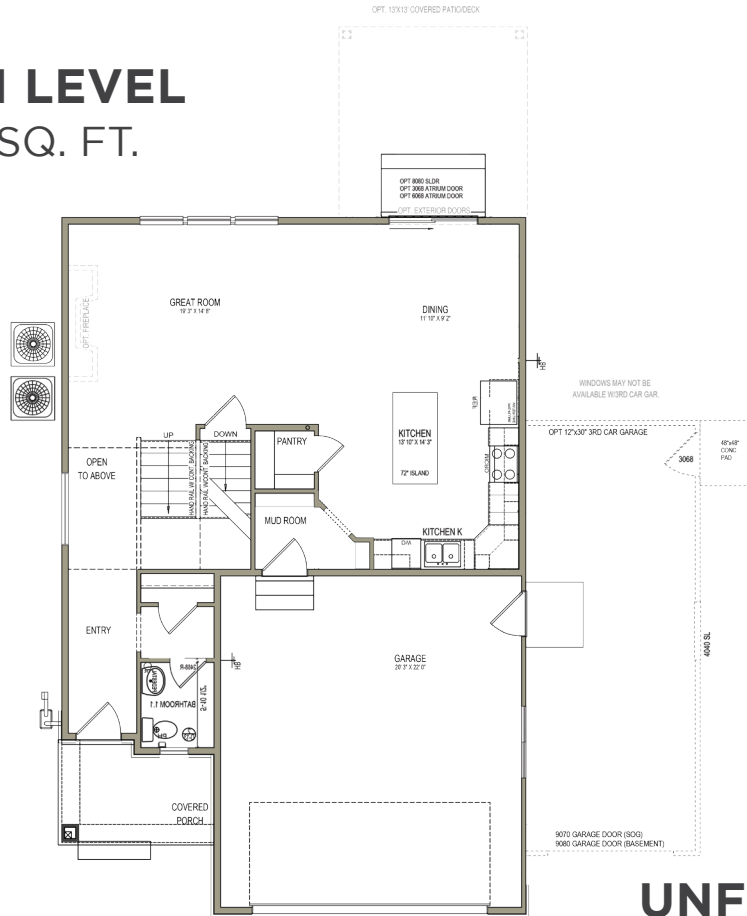
2.5-3 Car Garage

2,216 Finished Sq. Ft.

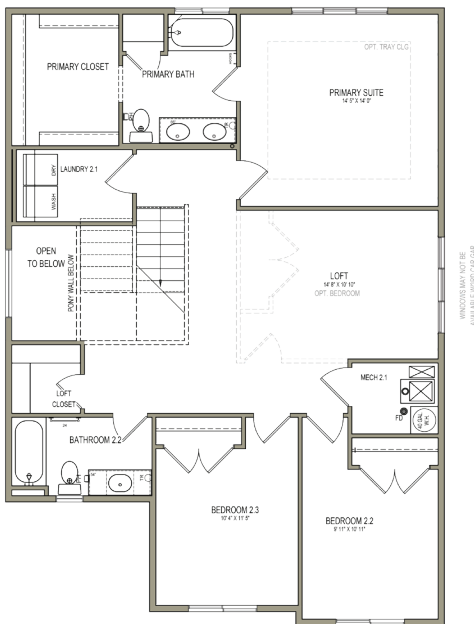


OFFICIAL  
**HOME BUILDER**  
OF THE  
UTAH JAZZ

## MAIN LEVEL 920 SQ. FT.



## UPPER LEVEL 1,295 SQ. FT.



## UNFINISHED BASEMENT 839 SQ. FT.

