



THE
CAMBRIDGE
AT CARSON
RIDGE

1758 S 270 W
Salem, UT, 84653



VISIONARYHOMES.COM



FARMHOUSE



TRADITIONAL W/STUCCO



Scan for more info

ABOUT THE PLAN

The Cambridge floor plan is the perfect upgrade for families looking for more space, with 3 bedrooms and 2 bathrooms. As you step inside, you'll be greeted by grand windows that flood the space with natural light, enhancing the open-concept design of the kitchen, living room, and dining room and creating an inviting ambiance throughout. Meanwhile, the primary bedroom provides a serene retreat complete with a luxurious bath and spacious walk in closet. An unfinished basement provides potential for additional living space. Enjoy an aesthetic and memorable every day life within the beautiful environment of this home.

3-6 Bedrooms

2-3 Baths

2-3 Car Garage

1,894 Finished Sq. Ft.

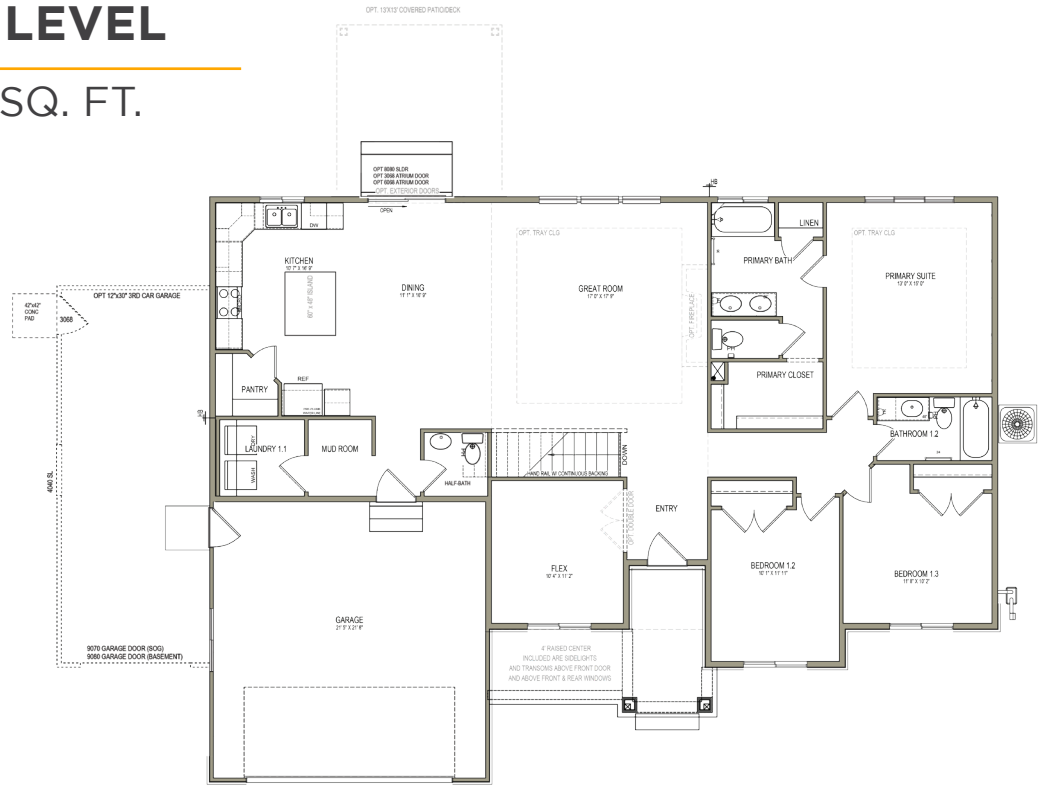
Call or text to make an appointment today!
801-921-5719



OFFICIAL
HOME BUILDER
OF THE
UTAH JAZZ

MAIN LEVEL

1,049 SQ. FT.



BASEMENT

1,896 SQ. FT.

