



THE
PENDLETON
AT CARSON
RIDGE

1758 S 270 W
Salem, UT, 84653



VISIONARYHOMES.COM



FARMHOUSE



TRADITIONAL W/STUCCO



Scan for more info

ABOUT THE PLAN

The Pendleton rambler floor plan provides ample space for your family with 3 bedrooms and 2 bathrooms. A flex room at the front can be transformed into your dream space—a tranquil home office, music room, or play room, the choice is yours. Just beyond the entry hallway, the home opens up to the spacious family room, kitchen, and dining room with large windows that flood the main level with natural light. And when it's time to unwind, retreat to the expansive primary bedroom, complete with a luxurious walk-in closet and spa-like primary bath. With quality finishes and an unfinished basement that offers potential for future rooms, the Pendleton provides the perfect blend of space, style, and sophistication for families seeking to upgrade to their dream home.

Call or text to make an appointment today!
801-921-5719

3-6 Bedrooms

2.5-3 Baths

2-3 Car Garage

2,049 Finished Sq. Ft.



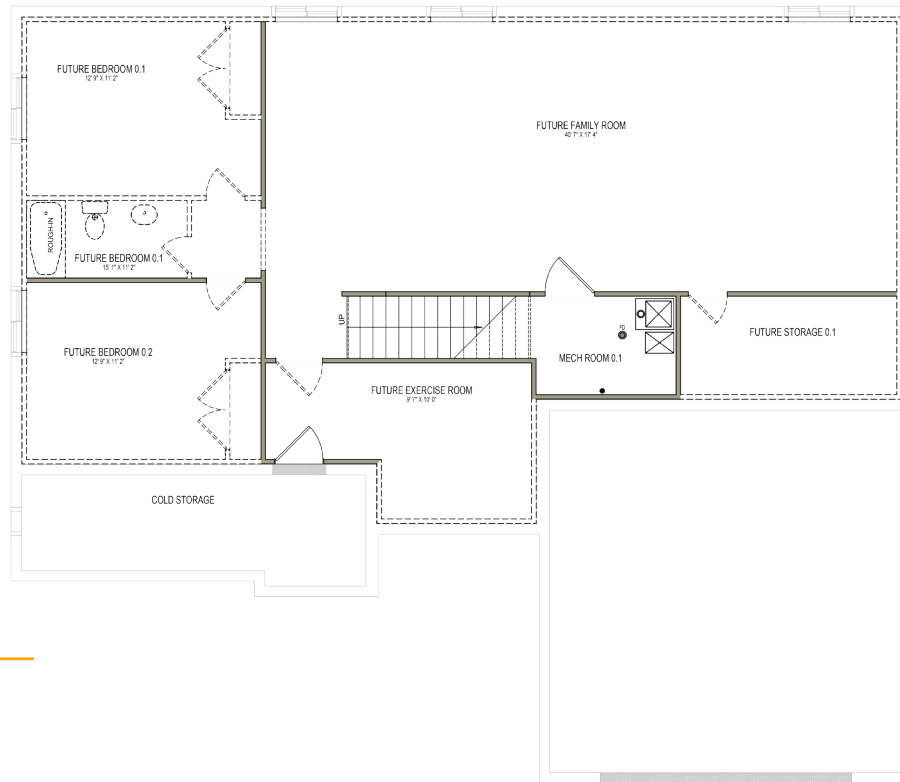
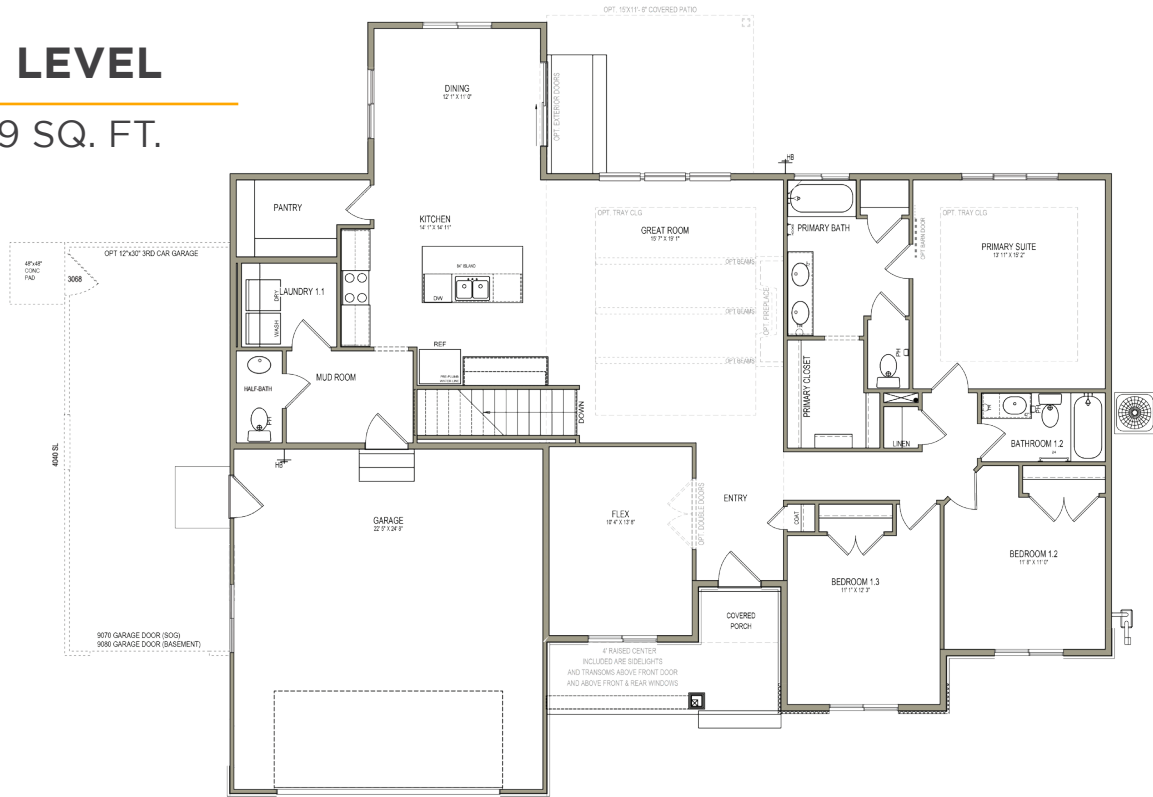
OFFICIAL
HOME BUILDER
OF THE
UTAH JAZZ

THE PENDLETON



MAIN LEVEL

2,049 SQ. FT.



BASEMENT

1,896 SQ. FT.

