



THE  
**WESTMINSTER**  
AT BEVAN  
ESTATES

705 North 200 East  
Tooele, UT, 84074



VISIONARYHOMES.COM



FARMHOUSE



TRADITIONAL



*Scan for more info*

**ABOUT THE PLAN**

The Westminster floor plan is designed to accommodate your family's needs for years to come with 3 bedrooms and 2.5 bathrooms. Enjoy how the open-concept main living space of the kitchen, dining, and family room brings loved ones together. Whether it's savoring morning coffee or unwinding after a long day, this versatile area provides the ideal backdrop for every beautiful ordinary moment with family and friends. Upstairs, discover the serenity and privacy of the spacious primary bedroom featuring a beautiful primary bath and a large walk-in closet. The upper level also includes two more bedrooms, a full bath in the hallway, and a conveniently situated laundry room. An unfinished basement leaves room for even greater finishing potential.

Call or text to make an appointment today!  
**801-985-6448**

3-4 Bedrooms

2.5-3 Baths

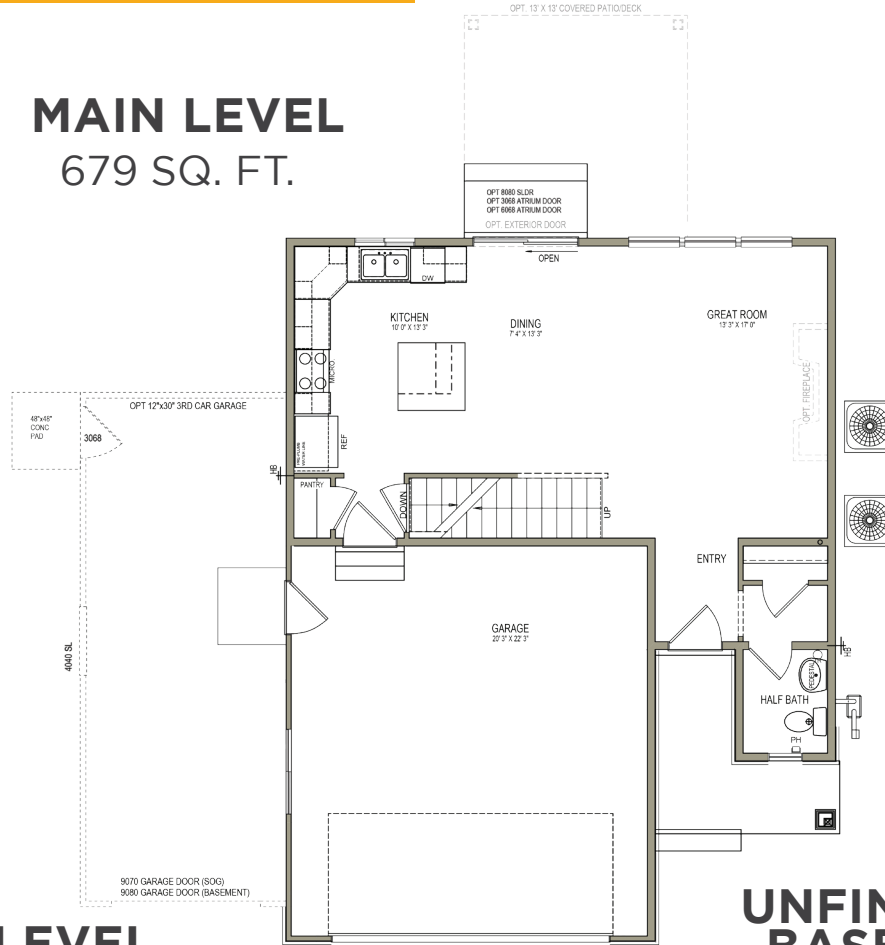
2-3 Car Garage

2,696 Finished Sq. Ft.



OFFICIAL  
**HOME BUILDER**  
OF THE  
UTAH JAZZ

## MAIN LEVEL 679 SQ. FT.



## UPPER LEVEL 1,017 SQ. FT.

## UNFINISHED BASEMENT 605 SQ. FT.

