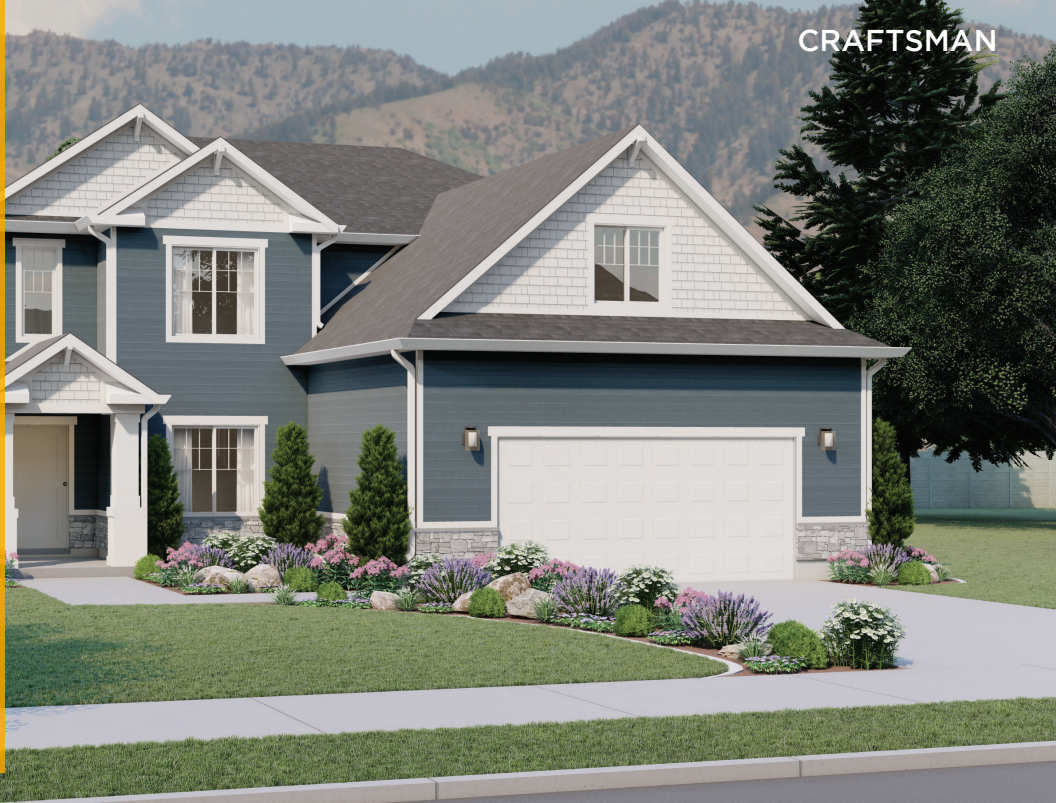




THE
REMINGTON
AT CARSON
RIDGE

1758 S 270 W
Salem, UT, 84653



VISIONARYHOMES.COM



Scan for more info

ABOUT THE PLAN

With 4 bedrooms and 2.5 bathrooms, the Remington 2-story floor plan is perfect for families looking for a high-quality home that will accommodate them for years to come. Just beyond the entryway, floor to ceiling windows illuminate the open-concept main living area. A gourmet kitchen with a walk-in pantry and spacious counters create a deluxe cooking experience. The primary suite brings luxury and relaxation to another level with the primary bath and massive walk-in closet with windows. Looking for additional space for a home office, playroom, or music room? From an open loft upstairs to the unfinished basement, the Remington is full of rooms with the potential to become more.

4-8 Bedrooms

2.5-3 Baths

2-3 Car Garage

2,876 Finished Sq. Ft.

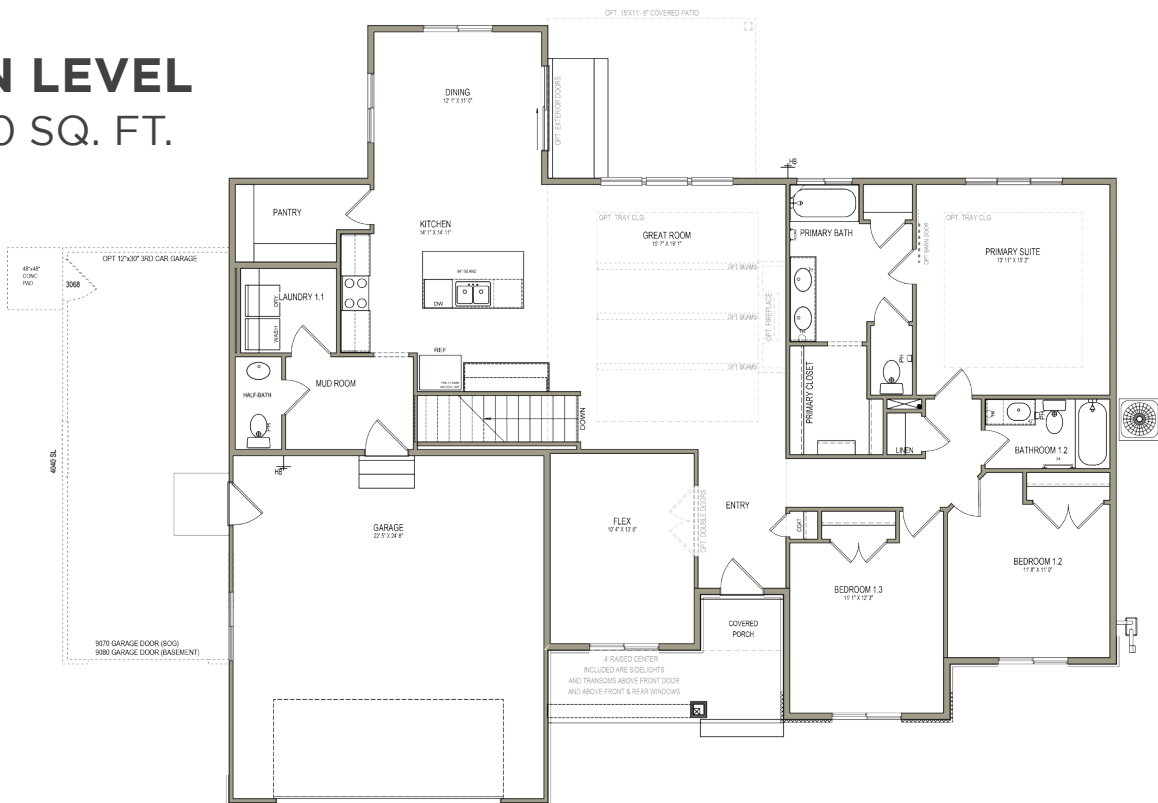
Call or text to make an appointment today!
801-921-5719



OFFICIAL
HOME BUILDER
OF THE
UTAH JAZZ

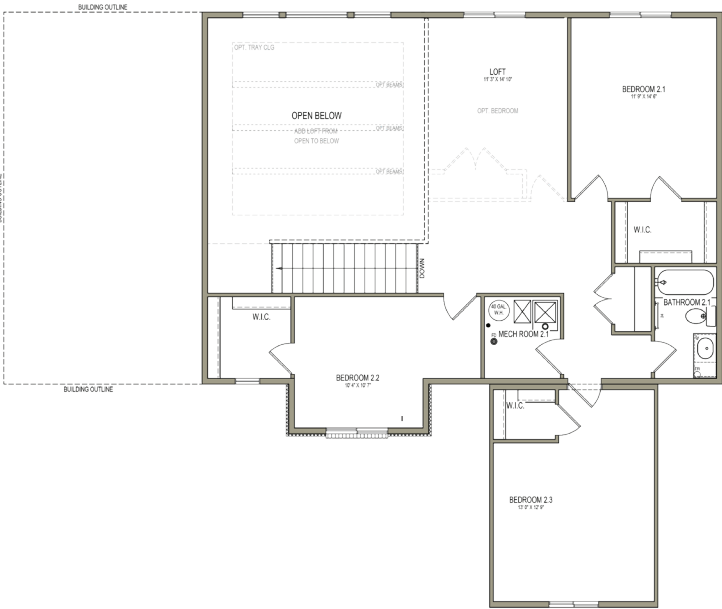
MAIN LEVEL

1,690 SQ. FT.



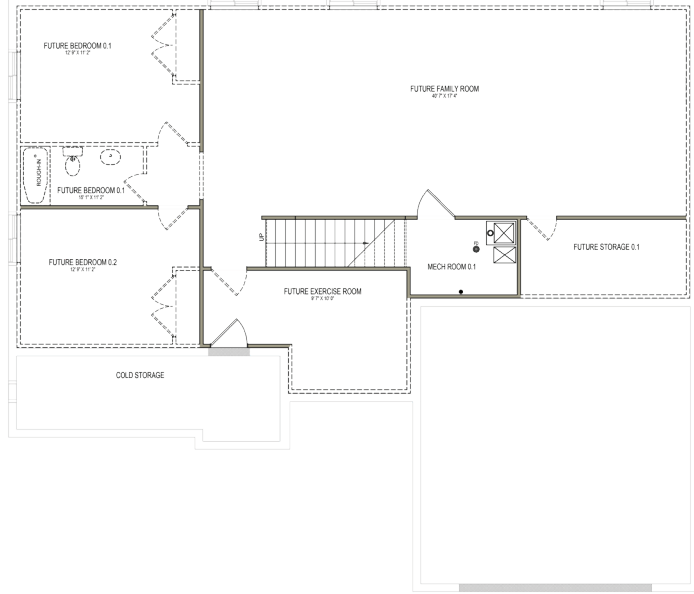
UPPER LEVEL

1,185 SQ. FT.



UNFINISHED BASEMENT

1,571 SQ. FT.



With 4 bedrooms and 2.5 bathrooms, the Remington 2-story floor plan is perfect for families looking for a high-quality home that will accommodate them for years to come. Just beyond the entryway, floor to ceiling windows illuminate the open-concept main living area. A gourmet kitchen with a walk-in pantry and spacious counters create a deluxe cooking experience. The primary suite brings luxury and relaxation to another level with the primary bath and massive walk-in closet with windows. Looking for additional space for a home office, playroom, or music room? From an open loft upstairs to the unfinished basement, the Remington is full of rooms with the potential to become more.