



THE
SUMAC
AT CARSON
RIDGE

1758 S 270 W
Salem, UT, 84653



VISIONARYHOMES.COM



FARMHOUSE



TRADITIONAL W/STUCCO



Scan for more info

ABOUT THE PLAN

With 4 bedrooms and 2.5 bathrooms, every inch of the Sumac floor plan adds space and amenities to accommodate your every need. Floor to ceiling windows flood natural light throughout the open concept living room, dining room, and kitchen, for an uplifting atmosphere that lights up all your everyday moments with friends and family. Situated away from the main area of the home, the primary bedroom provides a haven of serenity with gorgeous windows, a luxurious primary bath, and walk-in closet also featuring windows. Up the stairs, an open loft can with plenty of natural light be used as a lounge or study space. Additionally, enjoy the unfinished basement and its potential for more rooms. Choose the Sumac, where spaciousness and thoughtful design create a beautiful space for all of life's moments.

4-7 Bedrooms

2.5-4 Baths

2-3 Car Garage

2,561 Finished Sq. Ft.

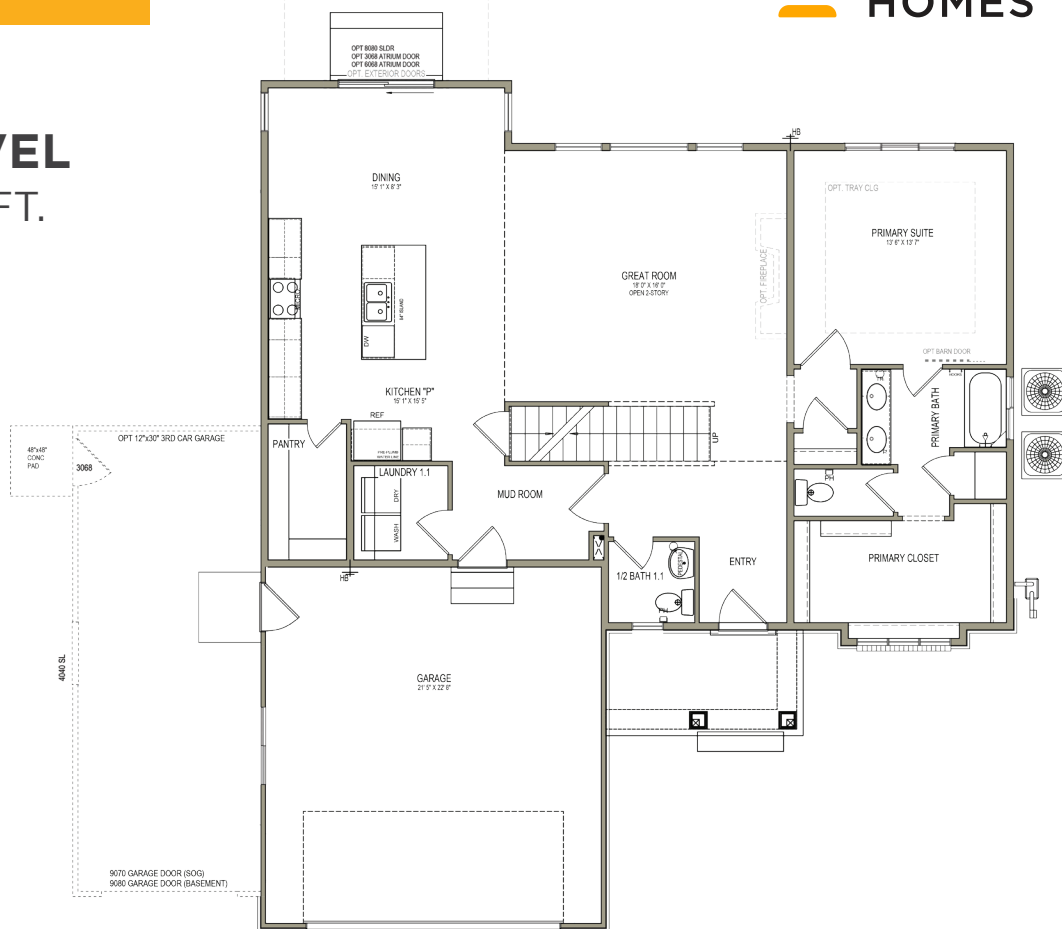
Call or text to make an appointment today!
801-921-5719



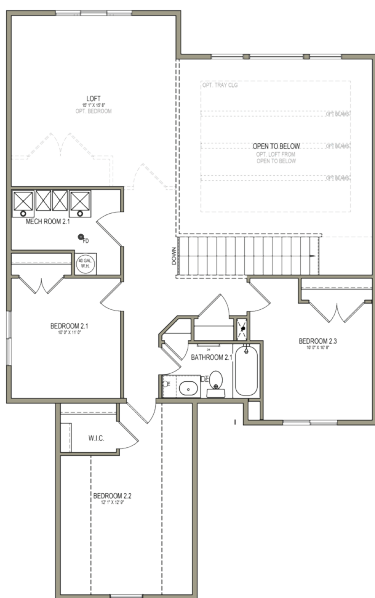
OFFICIAL
HOME BUILDER
OF THE
UTAH JAZZ

THE SUMAC

MAIN LEVEL 1,473 SQ. FT.



UPPER LEVEL 1,087 SQ. FT.



UNFINISHED BASEMENT 1,364 SQ. FT.

