



THE
SUMMERLYN
AT CARSON
RIDGE

1758 S 270 W
Salem, UT, 84653



VISIONARYHOMES.COM



FARMHOUSE



TRADITIONAL W/STUCCO



Scan for more info

ABOUT THE PLAN

The Summerlyn rambler has become a favorite among discerning buyers, and it's easy to see why. Featuring 3 beds and 2-2.5 baths, grand windows cast natural light over an open-concept living room, dining room, and kitchen. The gourmet kitchen is a culinary enthusiast's dream, complete with a large walk-in pantry. The dining and family room connect with the kitchen for you and your family to enjoy cooking, eating, and watching movies. Thoughtful touches abound throughout this floor plan, with ample closet space ensuring that organization is effortless and stylish. The exquisite owner's suite features a luxurious owner's bath and a spacious walk-in closet.



3-7 Bedrooms



2.5-3 Baths



2-3 Car Garage



1,967 Finished Sq. Ft.

Call or text to make an appointment today!
801-921-5719



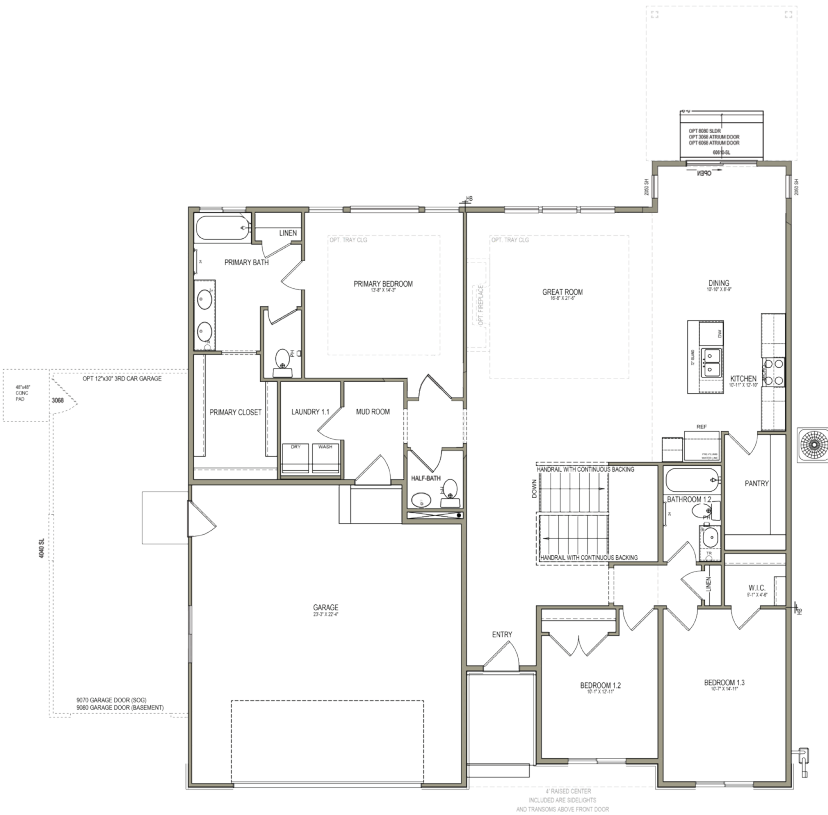
OFFICIAL
HOME BUILDER
OF THE
UTAH JAZZ

THE SUMMERLYN



MAIN LEVEL

1,967 SQ. FT.



BASEMENT

1,838 SQ. FT.

