



THE REDWOOD AT VINEYARD

600 South 1000 East,
Providence, UT 84332



CRAFTSMAN



FARMHOUSE



TRADITIONAL



Scan for more info

ABOUT THE PLAN

Open & airy, light & bright, the Redwood design is where you will find warmth and comfort throughout your home. This home floor plan comes with 3 bedrooms, 2.5 bathrooms, and 2,282 total square feet of wonderful space to call your own. As you walk into the Redwood, you are welcomed by beautiful exterior columns with unique and attractive exterior architectural styles available to suit your preference. In the entry of the Redwood, you'll find a Flex room, coat closet and 1/2 bathroom. The main living area and kitchen are open and inviting - perfect for family time and entertaining. The garage entry into the main living area includes a mud room for easy transitioning from outside to inside. The upper level of the Redwood features lots of space, a large loft, 3 bedrooms, and two bathrooms. Connected to the beautiful primary bedroom, you'll be thrilled to find a massive walk-in closet, a spacious primary bathroom, and closet space throughout. The Redwood truly is a floor plan that was designed with you in mind - Built for Living, Built for You.

3 Bedrooms

2.5 Baths

2-3 Car Garage

2,239 Finished Sq. Ft.

Call or text to make an appointment today!

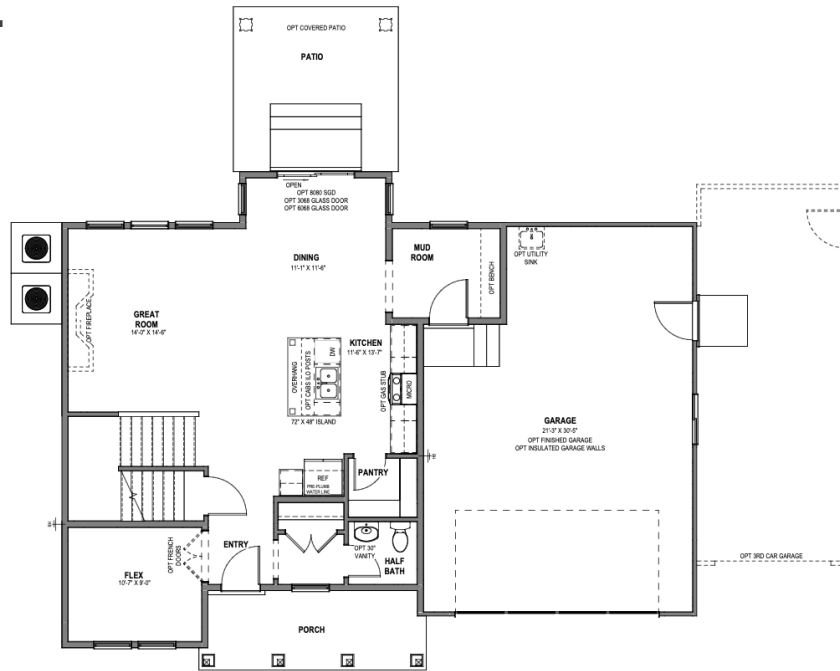
435-253-7458



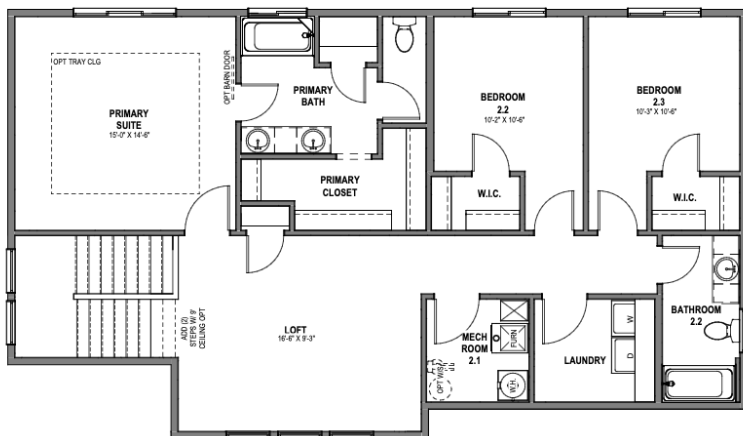
OFFICIAL
HOMEBUILDER
OF THE
UTAH JAZZ

THE REDWOOD

FIRST LEVEL 977 SQ. FT.



SECOND LEVEL 1,261 SQ. FT.



UNFINISHED BASEMENT 922 SQ. FT.

