



THE
OLIVIA
AT SUNRISE
RANCH

2041 West Pinnacle Avenue
Mapleton, UT, 84664



VISIONARYHOMES.COM



Scan for more info

ABOUT THE PLAN

Welcome home to the spacious Olivia townhome. This luxurious end unit floor plan features 4 bedrooms and 3.5 bathrooms, along with an open concept main living area with a large great room and kitchen with a deep island, a perfect area for cooking and entertaining. The upper floor features the spacious primary suite, with walk-in closet and extended bathroom. This floor also has two additional bedrooms and an amazing loft to use as a study or game area. The finished basement includes a fourth bedroom, a media area, and also a full bathroom. There is ample storage space throughout the Olivia and it includes a two-car garage. This townhome is perfect for a small family or young professional with roommates.

 **4 Bedrooms**

 **3.5 Baths**

 **2 Car Garage**

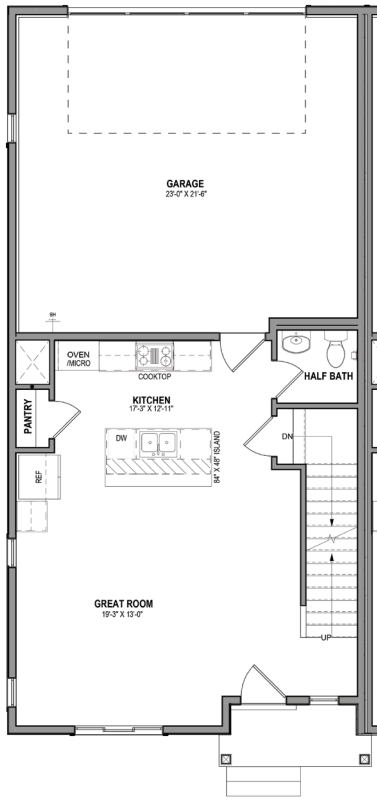
 **2,304 Finished Sq. Ft.**

Call or text to make an appointment today!
385-336-4561

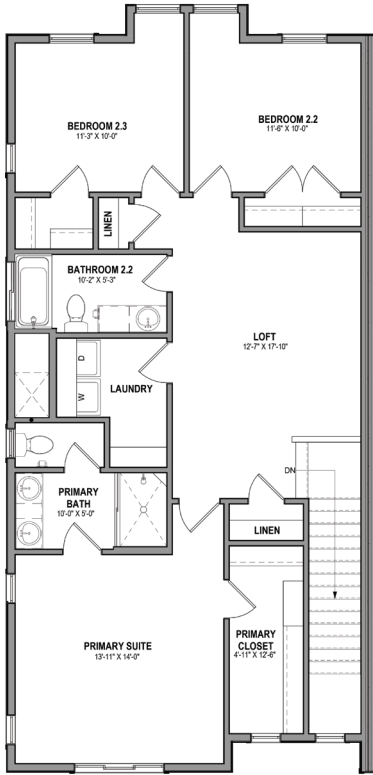


OFFICIAL
HOMEBUILDER
OF THE
UTAH JAZZ

MAIN LEVEL 632 SQ. FT.



UPPER LEVEL 1,094 SQ. FT.



FINISHED BASEMENT 578 SQ. FT.

