



THE HAWTHORNE FOX MEADOWS

365 North 600 West
Smithfield, UT 84335

CRAFTSMAN

FARMHOUSE



TRADITIONAL W/STUCCO



Scan for more info

ABOUT THE PLAN

The Hawthorne features an open and airy great room, kitchen, and dining area on the main floor, making it perfect for entertaining. The main floor includes a spacious owner's suite with a luxurious bath. A convenient laundry room and an additional bedroom are also located on the main floor. The Hawthorne offers a slab-on-grade foundation, or an optional basement, making it suitable for a variety of lifestyles. With 3 different exterior elevations to choose from, the Hawthorne is a stylish and functional Rambler that is sure to meet all of your needs.

Call or text to make an appointment today!
435-253-7106



2-5 Bedrooms



2-3 Baths



2 Car Garage



1,268 Finished Sq. Ft.



visionary
HOMES



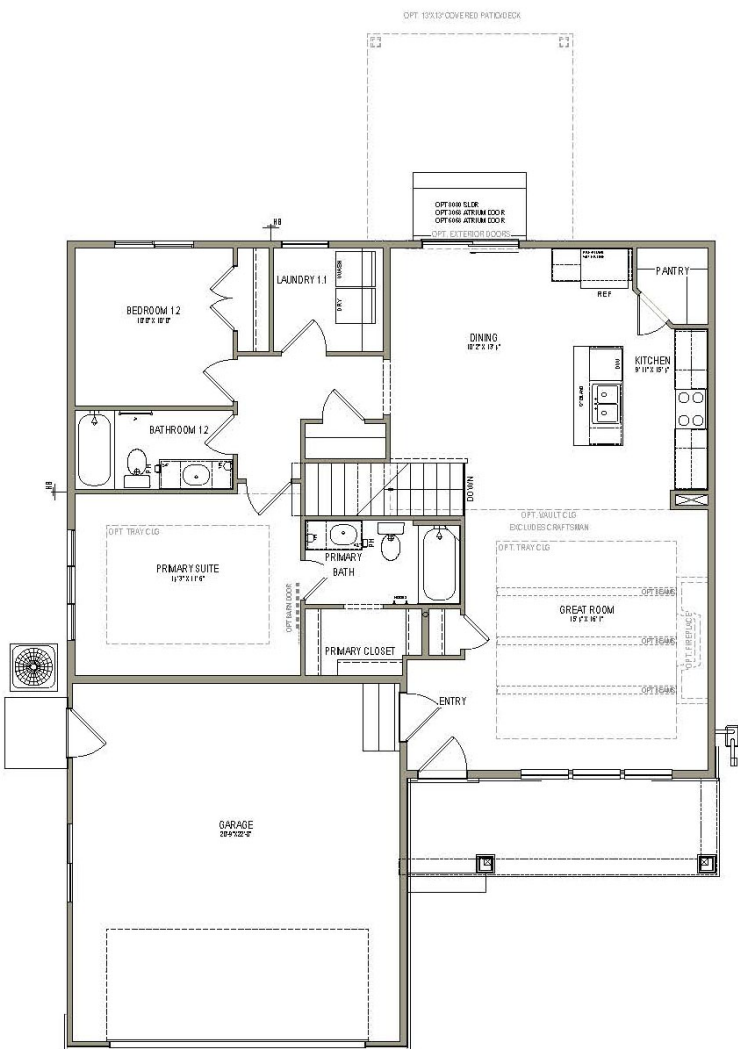
OFFICIAL
HOMEBUILDER
OF THE
UTAH JAZZ

THE HAWTHORNE



MAIN LEVEL

1267 SQ. FT.



BASEMENT LEVEL

1173 SQ. FT.

