



# THE GREYSTONE RIDGELINE PARK

337 West 3085 South,  
Nibley, UT 84321



CRAFTSMAN



*Scan for more info*

## ABOUT THE PLAN

With a contemporary design in every aspect, The Greystone floor plan is a beauty. Including 3 bedrooms and 2.5 baths, this 2-story floor plan provides the space you need in style. At the entrance, you'll discover a powder bath and hallway into the open concept living space. The kitchen features a large pantry to store all your kitchen necessities, with the great room having an optional fireplace to warm up the room during the winter months. A bright loft space with windows at the top of the stairs welcomes you into the resting space upstairs, with the owner's suite, owner's bath, spacious walk-in closet, bedrooms, convenient laundry, and bathroom.

Call or text to make an appointment today!  
**435-253-7316**

3 Bedrooms

2.5 Baths

2-3 Car Garage

1,794 Finished Sq. Ft.

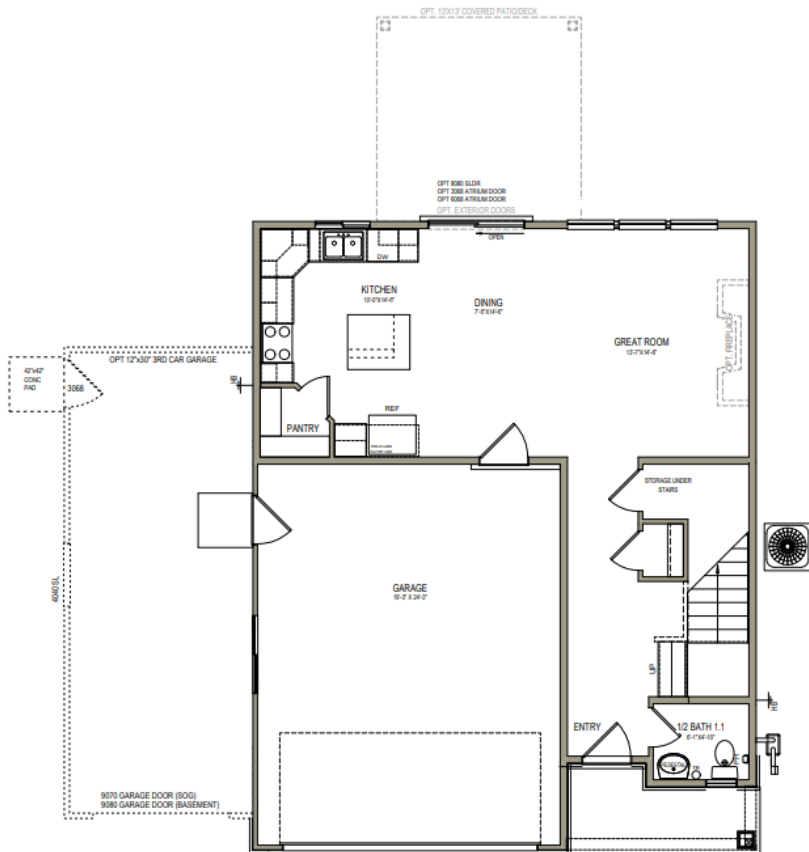


OFFICIAL  
HOMEBUILDER  
OF THE  
UTAH JAZZ

# THE GREYSTONE

## MAIN LEVEL

742 SQ. FT.



## UPPER LEVEL

1051 SQ. FT.

