



THE MADISON RIDGELINE PARK

337 West 3085 South,
Nibley, UT 84321



CRAFTSMAN

FARMHOUSE



TRADITIONAL W/STUCCO



Scan for more info

ABOUT THE PLAN

The simplicity of The Madison 2-story floor plan combine with a modern appeal for an overall stylish and functional design. Our Madison floor features 3 beds and 2.5 baths with an open-concept main living area. Featuring a large entrance welcomes you into the home. The flow from the family room into the kitchen and dining space make you feel right at home, with plenty of windows for natural light. A walk-in pantry in the kitchen provides lots of space for storing your kitchen essentials and food. Conveniently located off the garage is a mudroom and powder room. Step upstairs to discover a loft area near an open to below view of the front door, which creates an open and airy feel to the home you'll love. Feel ultimate relaxation when in your owner's suite with a walk-in closet and owner's bath. With two bedrooms, one with a walk-in closet, also upstairs. This plan is Slab-on-Grade only.



3-5 Bedrooms



2.5-3 Baths



2-3 Car Garage



1,950 Finished Sq. Ft.

Call or text to make an appointment today!

435-253-7316



visionary
HOMES



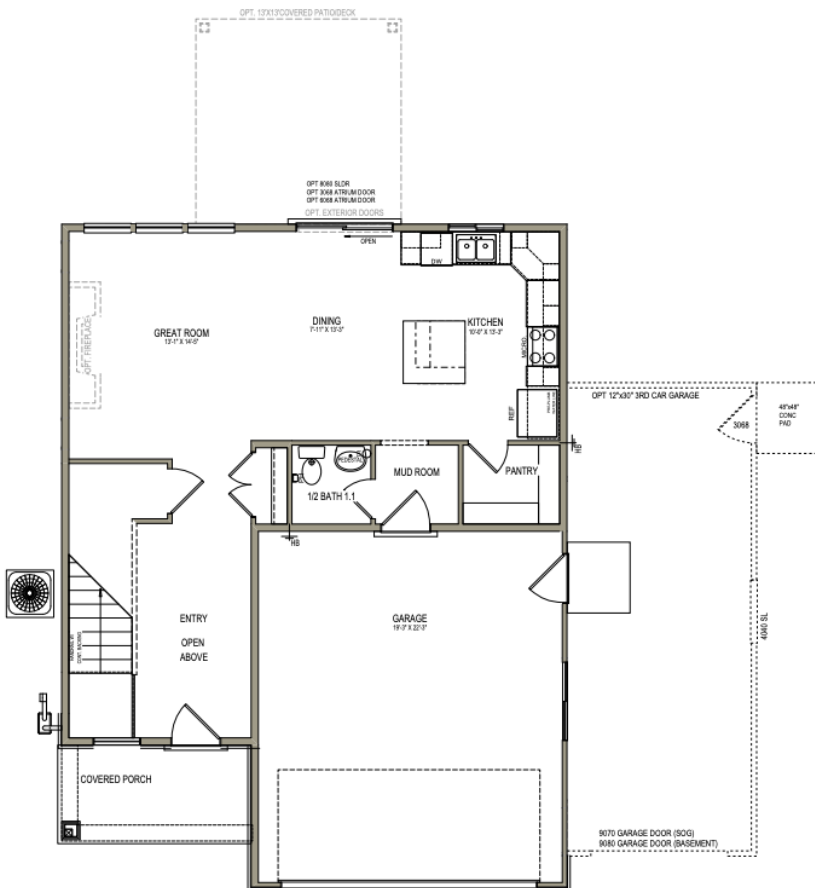
OFFICIAL
HOMEBUILDER
OF THE
UTAH JAZZ

THE MADISON



MAIN LEVEL

791 SQ. FT.



UPPER LEVEL

1158 SQ. FT.

