



THE SITKA

RIDGELINE PARK TOWNHOMES

337 West 3085 South,
Nibley, UT 84321

VISIONARYHOMES.COM

ABOUT THE PLAN

Enter into the Sitka townhome to discover an open concept main living space you'll love. This 2-story floor plan features 3 beds and 2.5 baths, with all the bedrooms on the top floor. The dining, family room, and kitchen on the main level provide the perfect space for your family to relax, cook, eat, and socialize together. The kitchen includes a walk-in pantry and a wrap-around counter, where you can add a few stools for snack time to working on homework. Upstairs you'll discover a loft off the stairs, an owner's suite featuring an owner's bath and spacious walk-in closet with a window, bedrooms, a bath, and the laundry room.

Call or text to make an appointment today!
435-253-7316



Scan for more info

3 Bedrooms

2.5 Baths

2 Car Garage

1,549 Finished Sq. Ft.

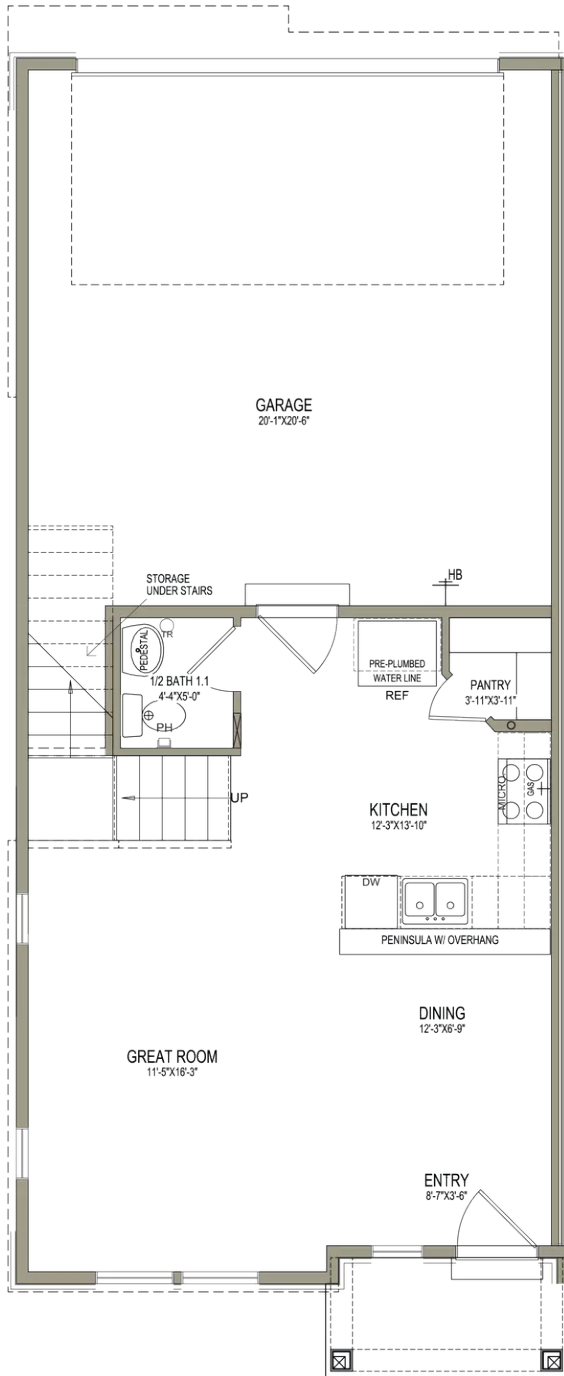


OFFICIAL
HOME BUILDER
OF THE
UTAH JAZZ

THE SITKA

MAIN LEVEL

529 SQ. FT.



UPPER LEVEL

995 SQ. FT.

