



# THE HAWTHORNE

The Village at Fox Meadows

795 West 440 North  
Smithfield, UT 84335

CRAFTSMAN



FARMHOUSE



TRADITIONAL W/STUCCO



*Scan for more info*

## ABOUT THE PLAN

The Hawthorne features an open and airy great room, kitchen, and dining area on the main floor, making it perfect for entertaining. The main floor includes a spacious owner's suite with a luxurious bath. A convenient laundry room and an additional bedroom are also located on the main floor. The Hawthorne offers a slab-on-grade foundation. With 3 different exterior elevations to choose from, the Hawthorne is a stylish and functional rambler that is sure to meet all of your needs.

2-5 Bedrooms

2-3 Baths

2 Car Garage

1,268 Finished Sq. Ft.

Call or text to make an appointment today!

**801-853-8759**



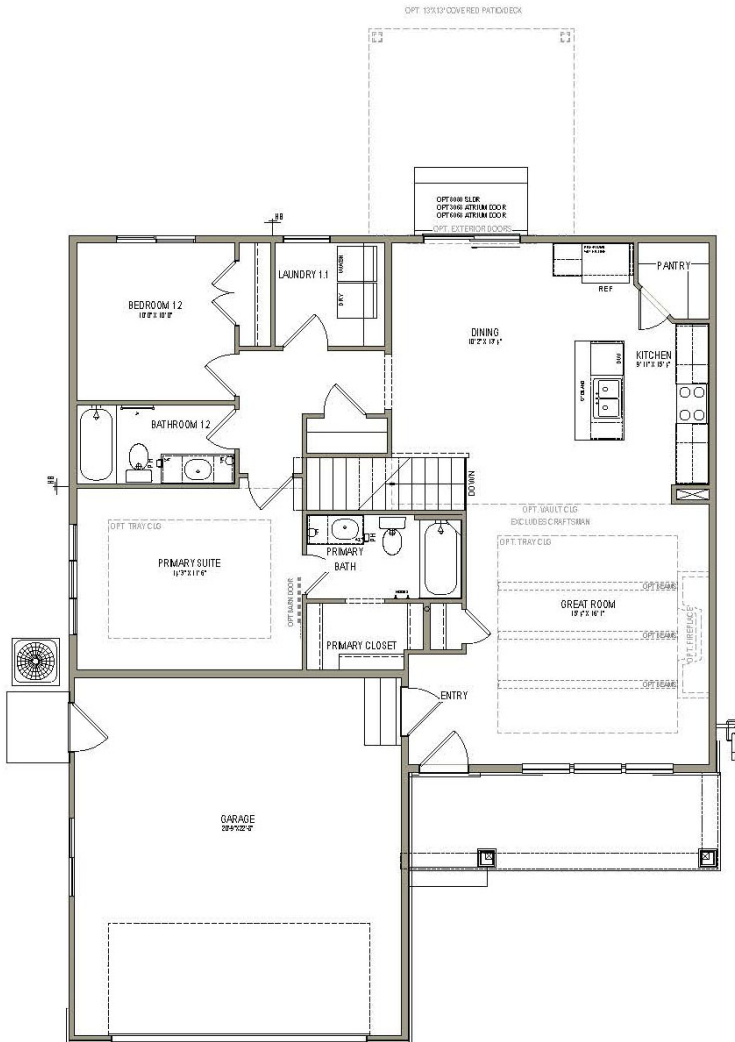
OFFICIAL  
HOMEBUILDER  
OF THE  
UTAH JAZZ

# THE HAWTHORNE



## MAIN LEVEL

1267 SQ. FT.



## BASEMENT LEVEL

1173 SQ. FT.

