



THE HILLDALE

The Village at Fox Meadows

795 West 440 North,
Smithfield, UT 84335



TRADITIONAL W/STUCCO



CRAFTSMAN



FARMHOUSE



Scan for more info

ABOUT THE PLAN

Enjoy your ideal lifestyle in the Hilldale rambler floor plan featuring 3 beds and 2 baths. With an open-concept main living space right when you enter showcasing the family room, kitchen, and dining for everything from cooking, lounging and socializing with the family. Discover a hallway off the kitchen leading into the bedrooms, laundry, and bathroom. With the bedrooms facing the back of the home and the owner's suite on the other side for a secluded, comfy feel so you can relax and unwind, including an owner's bath and walk-in closet. The optional unfinished basement provides the option of 3 future bedrooms, 1 future bathroom, and a very large future family room.

Call or text to make an appointment today!
801-853-8759

3-6 Bedrooms

2-3 Baths

2-3 Car Garage

1,263 Finished Sq. Ft.



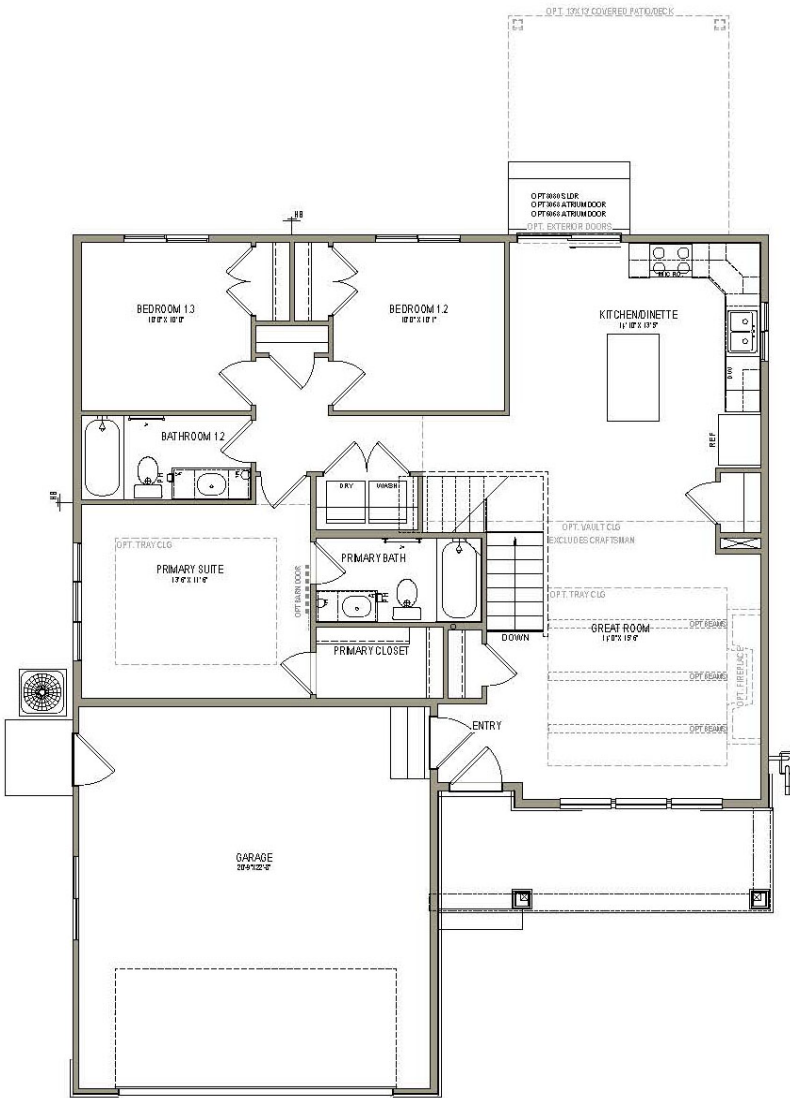
OFFICIAL
HOMEBUILDER
OF THE
UTAH JAZZ

THE HILDALE



MAIN LEVEL

1,263 SQ. FT.



BASEMENT LEVEL

1,169 SQ. FT.

