



THE MEDFORD

WOODMORE

POINT

1813 South 1280 West,
Logan, UT 84321



ABOUT THE PLAN

With a beautiful modern exterior, the Medford townhome offers up style and function for the ideal home, whether as a starter home, family home, or after retirement. The main floor showcases the living room, dining, kitchen with a walk-in pantry, and a half bath off garage. On the second floor there's a loft space for a reading nook, bedrooms, convenient laundry, and a large walk-in closet in the owner's suite off the owner's bathroom. With a total of 3 bedrooms, 2.5 bathrooms, and a 2-car garage.

Call or text to make an appointment today!

435-253-7352



Scan for more info



3 Bedrooms



2.5 Baths



2 Car Garage



1,476 Finished Sq. Ft.



visionary
HOMES



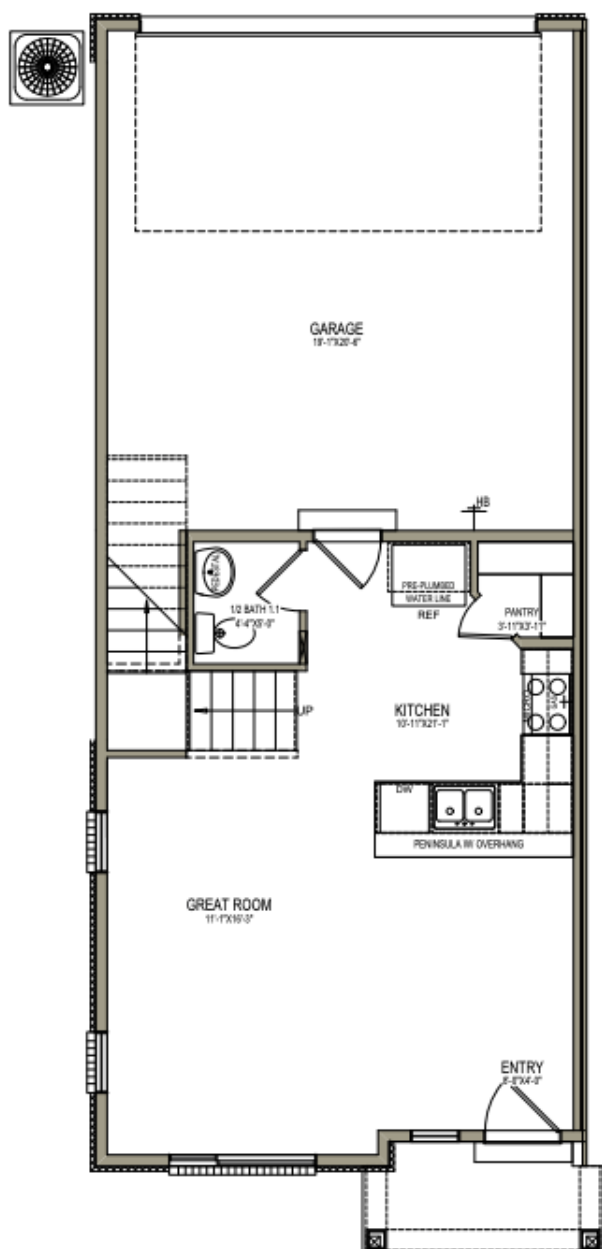
OFFICIAL
HOMEBUILDER
OF THE
UTAH JAZZ

THE MEDFORD



MAIN LEVEL

504 SQ. FT.



UPPER LEVEL

962 SQ. FT.

